

Lookingglass Theatre Company
proudly presents

LOOKINGGLASS

ALICE

Adapted and Directed by David Catlin ♦
From the works of Lewis Carroll

Produced in association with The Actors Gymnasium



Allstate | CHICAGO'S OWN
GOOD HANDS

Allstate is the Production Sponsor and proud supporter of the matinee program for *Lookingglass Alice*

Andrew White ♦
Artistic Director

Rachel E. Kraft
Executive Director

Philip R. Smith ♦
Producing Artistic Director

Heidi Stillman ♦
Artistic Director of New Work

Daniel Ostling ♦, USA
Scenic Designer

Mara Blumenfeld ♦, USA
Costume Designer

Alison Siple ♦
Associate Costume Designer

Christine A. Binder ♦, USA
Lighting Designer

Ray Nardelli ♦
Sound Designer

Sarah Burnham
Properties Designer

Sylvia Hernandez-DiStasi ♦
Choreographer

Lee Brasuell
Rigger

Jeri Frederickson *
Production Stage Manager

Joel Hobson
Production Manager

Chad Hain
Technical Director

CAST

Red Queen and Others.....Molly Brennan*
Mad Hatter and Others.....Kevin Douglas ♦*
Cheshire Cat and Others.....Anthony Fleming III ♦*
Alice.....Lauren Hirte ♦*
White Knight and Others.....Samuel Taylor*
Alice.....Lindsey Noel Whiting ♦*

UNDERSTUDIES

Kara Davidson, Micah Figueroa, Chris Mathews, Isaac Schoepp and Samuel Zeisel



USA denotes Member of United Scenic Artists, the union for Designers, Artists and Craftspeople;

*Member of Actors' Equity Association, the union for professional actors and stage managers;

♦Lookingglass Theatre Company Ensemble Member, Artistic Associate or Production Affiliate

Opening Night Sponsor



Lookingglass Theatre Company is a member of Theatre Communications Group (TCG), the national service organization for American Theatre, and of the League of Chicago Theatres, the local service organization for theatre.

Lookingglass Alice

PRODUCTION STAFF

Assistant Technical Director.....	Ben Dawson
Administrative and Production Assistant.....	Kelly Crook
Assistant Stage Manager.....	Mary Hungerford*
Assistant Costume Designer.....	Carolyn Rose Sullivan
Assistant Lighting Designer.....	Jared Gooding
Assistant Properties Designer.....	Amanda Herrmann
Assistant Rigger/Master Carpenter.....	Isaac Schoepp
Original Composition.....	Andre Pluess ♦, USA and Ben Sussman, USA
Dramaturg.....	Marti Lyons
Lead Carpenter.....	Dustin Pettegrew
Carpenters.....	Jacob Brown and Jon Flynn
Scenic Charge.....	Zoe Shiffrin
Master Electrician.....	Jeff Glass
Assistant Master Electrician.....	Cassie Mings
Electricians.....	Jackie Guerrero, Andrew Iverson and John Kelly
Wardrobe Supervisor.....	David Galbreath
Wardrobe Assistant.....	Kate Grudichak
Costume Manager.....	Mieka van der Ploeg
Costume Shop Assistant.....	Leah Munsey Konops
Hair and Wigs.....	Christine Conley
Original Wig Design.....	Dawn Dudley
Drapers.....	Pamela Maurer, Beth Uber and the Steppenwolf Costume Shop
Stitchers.....	Alice Broughton, Stephanie Cluggish, Darcy Hofer, Elizabeth Hunstad and Amy Prindle
Tailors.....	Jef Ouwens and Fox Bros.
Costume Crafts.....	Melissa Bochat
Fabric Graphic Design.....	Heather Anderson
Sound Engineer.....	Christopher M. LaPorte
Deck Crew.....	Jeanette Klemeyer and Robert Tolzien
Casting.....	Philip R. Smith ♦ with Raymond Fox ♦
Stage Management Intern.....	Amalie Vega
Scene Shop Intern.....	Taylor Figura
Wardrobe Interns.....	Hannah Rose Compton and Mel Motz



USA denotes Member of United Scenic Artists, the union for Designers, Artists and Craftspeople;
 *Member of Actors' Equity Association, the union for professional actors and stage managers;
 ♦ Lookingglass Theatre Company Ensemble Member, Artistic Associate or Production Affiliate



Partial support for open captioning provided by Theatre Development Fund.

THE LOCAL
CHICAGO
★★★★

312.280.8887
www.TheLocalChicago.com

**Treat yourself to a little TLC
with pre and post theater dining
at The Local Chicago.**



Located just around the corner at
198 E Delaware Place

Serving Breakfast, Lunch and Dinner | Monday - Sunday: 6:30 am - 2:00 am

In Conversation

with Lauren Hirte and Lindsey Noel Whiting

Interview by Literary Manager and Company Dramaturg Marti Lyons

Lauren and Lindsey, Alices, if you will, when did you each become involved with *Lookingglass Alice*?

LAUREN HIRTE: I first did *Lookingglass Alice* for the original run of the show in 2005. It's hard to believe it was that long ago!

LINDSEY NOEL WHITING: I understudied the show for the Chicago run in 2007. Kevin Douglas and I both got involved during that run and we spent a good chunk of that tech week running lines in the green room.

Do you ever get to work together on the show or is the business of *Alice* a more individual pursuit?

LH: This is always a funny thing for us. While we have worked on so many of the same shows we rarely get to ever do scenes together. It has been great to work together on *Lookingglass Alice*, though, because I think each of our takes on Alice has informed the other.

LNW: It's true and it's so nice to have someone else who knows what you're going through, especially when it comes to the circus stuff. Lauren has been a great resource when it comes to dealing with all the unique demands of the show.

Can you give us some highlights of places you have toured with the show, maybe share a favorite tour story?

LH: I've been to the McCarter Theatre in Princeton, NJ, the New Victory in NYC and The Arden in Philadelphia. At the New Victory, we had some rigging challenges and actually had to change the ending. Instead of exiting down my rabbit hole as usual, I instead walked off stage and exited through the audience and lobby. That lobby opened out to the bustling 42nd street in New York City! While I was hesitant at first about the ending change, there was something very special about it that I then carried with me throughout subsequent runs.

LNW: I did the show at Actors Theatre of Louisville, Syracuse Stage and the Alliance Theatre in Atlanta. I loved jumping into new communities of theatre artists and bringing this show to different audiences. Also, I have a lot of really wonderful food memories. Dinosaur BBQ in Syracuse, Flying Biscuit in Atlanta, and the now closed Lynn's Paradise Cafe in Louisville. *Lookingglass Alice* makes you hungry.



Lauren Hirte 2008



Lindsey Noel Whiting 2009

I am in such awe of the physical feats that you both must perform throughout the journey of the show each night– do you have a favorite moment to perform? Has it changed over the years?

LNW: The bungee juggle is pretty darn fun and it comes at the end of the show so you can really give it your all. However, it's not the most fun to tech because it means being in a harness for a long time.

LH: I love the cloud swing routine. Alice has accomplished something big. It is a moment I get to take a deep breath and say ok whats next. I'm ready.

What are you most looking forward to this time?

LH: I think there are a few things I am looking forward to. One is the fact that we get to bring this show to so many new people. Also I am excited to attack the role of Alice from a different perspective. I played Alice for the first time almost 10 years ago. And just as Alice grows and changes throughout the show, as you can imagine, I have changed and grown a lot as a person in the past years. Especially in the last 4 years since the show was last produced I have been wandering in a Wonderland of sorts on my own; traveling, learning to live in a new city, etc. So I am excited to see how these new experiences will inform Alice in her travels to become a queen.

LNW: I'm excited to be doing the show with Samuel again. We've been having adventures together off-stage for the last four years but I've really missed performing with him. And I'm excited to be back with everyone else as well. This show is a little bit like Everest so the people who are willing to come back and do it again have to be a little nuts, in a good way. It's very hard work and you don't work that hard for something unless you really love it.

OUR
HANDS
embrace
THE ARTS.



Allstate is proud to sponsor
Lookingglass Theatre Company's
"Lookingglass Alice"

Allstate
CHICAGO'S OWN
GOOD HANDS

© 2014 Allstate Insurance Co.



Summer Camp 2015

Registration opens January 12, 2015

Multiple
camps for all
ages throughout
Chicago!

lookingglass

Discounts and scholarships available
773.477.9257 x193
lookingglasstheatre.org/education

PROFILES



MOLLY BRENNAN



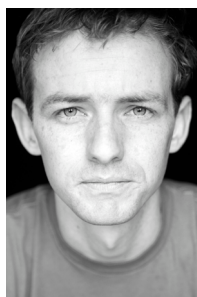
KEVIN DOUGLAS



ANTHONY FLEMING
III



LAUREN HIRTE



SAMUEL TAYLOR



LINDSEY NOEL
WHITING

MOLLY BRENNAN (Red Queen and Others) is glad to be back as the Red Queen. She was most recently seen in Second City's *Mixtape* and as Madam Barker in Red Tape's *The Life and Death of Madam Barker*. Other credits include *Second City's Guide to the Opera* at Lyric, *Peter Pan (A Play)* at Lookingglass, *Animal Crackers* at the Goodman, *Theatrical Essays* at Steppenwolf, and *500 Clown Mabeth* and *500 Clown Frankenstein* in multiple venues in Chicago and the United States.

KEVIN DOUGLAS (Mad Hatter and Others/ Ensemble Member) is excited to be back on the Lookingglass stage! He was last seen in *Mr. Rickey Calls a Meeting*. Other Lookingglass credits include *Black Diamond: The Years the Locusts Have Eaten*, *Lookingglass Alice*, *Around the World in 80 Days* (Jeff Nomination Best Supporting Actor), *Our Town*, co-directed by Anna D. Shapiro and Jessica Thebus, and *The Great Fire*. He has performed at Actors Theatre of Louisville, Baltimore Center Stage, Kansas City Rep, and Alliance Theatre. Kevin is a writer and lover of comedy. Graduated from DePaul University the Theatre School. He would like to thank God for this opportunity!

ANTHONY FLEMING III (Cheshire Cat and Others/ Ensemble Member) leaps head first into his tenth production of *Lookingglass Alice*. He was last seen at Lookingglass in 2013 in *Big Lake*, *Big City* directed by ensemble member David Schwimmer. Other Lookingglass productions include *Icarus*, *Arabian Nights*, *Mr. Rickey Calls A Meeting*, *1984*, and *Race*. Select regional theater credits: *Ma Rainey* with Milwaukee Rep and *Clybourne Park* with Arizona Theater Company. Mr. Fleming is a Chicagoan, a father, and a proud member of AEA who has been working on Chicago stages since 1997, including Victory Gardens, Steppenwolf, The Goodman, Court, Chicago Theater Company, Piven Theater, and Famous Door. He will be seen next here at Lookingglass in the spring of 2015 in David Catlin's adaptation of *Moby Dick*.

LAUREN HIRTE (Alice/Artistic Associate) is thrilled to be falling down the rabbit hole for this the eighth run of *Lookingglass Alice*. She originated the role of Alice, and has toured with the show to The McCarter, The Arden, and the New Victory Theatre in NYC. An Artistic Associate, Lookingglass credits include *Hard Times*, *Hephaestus*, *Fedra*, *Icarus*, and

PROFILES (CONTINUED)

most recently *The Little Prince*. Regional credits include *A Christmas Carol*, Actors Theatre of Louisville; and the title role in Milwaukee Rep's *Diary of Anne Frank*. Lauren has studied, taught and performed at the Piven Theatre, and at the Actors Gymnasium, where she "learned to fly."

SAMUEL TAYLOR (White Knight and Others) Prior Lookingglass Credits include: *Lookingglass Alice* (Chicago, Louisville, Atlanta, Syracuse), *Peter Pan (A Play)*. Chicago credits include: *The Feast (An Intimate Tempest)* and *Hunchback* at Redmoon, *Hot L Baltimore* at Steppenwolf, and several productions at Chicago Shakespeare Theatre. Regional credits include: *Doctor's Dilemma* at American Players Theatre, *Christmas Carol* at Actors Theatre of Louisville, *The Boys Next Door* at Syracuse Stage, and *The Spy on tour* with the Acting Company. TV Credits include "Boardwalk Empire," "Mob Doctor," and "Crisis." Samuel is a Stakeholding Partner in the Back Room Shakespeare Project.

LINDSEY NOEL WHITING (Alice/Artistic Associate) is excited to be back with the cast and crew of *Lookingglass Alice*. Previous Lookingglass credits include *Cascabel*, *The Great Fire*, and *Icarus*. Regionally, Lindsey has performed at Actors Theatre of Louisville, The Alliance Theatre, and Syracuse Stage. Chicago credits include: *The Snow Queen* (Victory Gardens); *Once Upon A Time (or The Secret Language of Birds)*, *The Golden Truffle*, *The Cabinet*, and *Sink*, *Sank*, *Sunk* (Redmoon), as well as several circuses at The Actors Gymnasium. Lindsey also performs with Mucca Pazza, a circus punk marching band. As always, thanks to Mom for her continued support.

DAVID CATLIN (Director/Writer/Ensemble Member) will direct *Moby Dick* for Lookingglass in late spring 2015. Recent Lookingglass directing credits include: *The Little Prince*, *Icarus*, and *Black Diamond* (with Nicky Brooks). Regional directing credits include: McCarter (Princeton, NJ), Arden (Philadelphia), The New Victory (NYC), Syracuse Stage, Actors Theater of Louisville, the Alliance (Atlanta) and the Getty Villa (Los Angeles). Other recent directing credits include: *The Phantom Tollbooth* (DePaul). David teaches acting with Northwestern University's theatre department. David lives in Chicago with his wife Kerry and their two daughters Emerson and Saylor.

DANIEL OSTLING (Scenic Designer/Ensemble Member) Lookingglass: *North China Lover* (sets/ lights), *Bengal Tiger at the Baghdad Zoo*, *Eastland*, *Ethan Frome*, *Trust*, *Arabian Nights*, *Brothers Karamazov*, *Argonautika*, *Hillbilly Antigone*, *Secret in*

the Wings, *Race*, *Hard Times*, *Eleven Rooms of Proust*, *Baron In The Trees*, *Metamorphoses*, *The Idiot*, *28*, *Vanishing Twin*. Regional: Goodman; Steppenwolf; Chicago Shakespeare; McCarter; Huntington; Shakespeare Theatre DC; ACT (SF); Berkeley Repertory; Mark Taper Forum; La Jolla Playhouse; California Shakespeare; Oregon Shakespeare Festival; Seattle Repertory; Portland Center Stage; The Alley. NYC: Lincoln Center; Public; Playwrights Horizons; Shakespeare in the Park; New Victory. Broadway: *Clybourne Park*, *Metamorphoses*. International: Donmar Warehouse & Barbican (London), LaScala (Italy), Melbourne Theatre, Bunka Kaikan & Orchard Hall (Tokyo), Calgary Theatre. Opera: Metropolitan Opera: *La Sonnambula*, *Lucia di Lammermoor*; Lyric Opera Chicago: *Merry Widow*. Teaching: Northwestern University.

MARA BLUMENFELD (Costume Designer/ Ensemble Member) has designed costumes for over thirty Lookingglass productions, including most recently *In the Garden*, *Bengal Tiger at the Baghdad Zoo*, *Metamorphoses*, and *Eastland*. Elsewhere in Chicago, she has designed numerous productions for The Goodman Theatre, Steppenwolf Theatre Company, Chicago Shakespeare Theater and Court Theatre. A frequent collaborator with Mary Zimmerman, their credits include the Broadway and off-Broadway productions of *Metamorphoses*, *The Notebooks of Leonardo da Vinci* at Second Stage, *Lucia di Lammermoor* and *La Sonnambula* for the Metropolitan Opera. She is the recipient of three Joseph Jefferson Awards and was the 2012 recipient of the Michael Merritt Award for Excellence in Design and Collaboration.

ALISON SIPLE (Associate Costume Designer/ Artistic Associate) Lookingglass: *Still Alice*, *The Great Fire*, *Mr. Rickey Calls A Meeting*, *Fedra: Queen of Haiti*, *Icarus*, *Black Diamond*. Recent projects: *Our Town* (Almeida Theatre, London), *All Our Tragic* (Hypocrites), *Ask Aunt Susan* (Goodman), *Mikado* (Hypocrites), *Lord of the Flies* (Steppenwolf TYA), *Motortown* (Steep Theatre), *Pirates of Penzance* (A.R.T.), *Our Town* (Huntington Theatre, Broad Stage, Barrow Street Theatre, Hypocrites). Upcoming projects: *HMS Pinafore* (Hypocrites). Alison was one of 12 Chicago artists to receive a 2011 3Arts Grant. She won the 2010 Equity Jeff Award for *The Mystery of Irma Vep* (Court Theatre) and the 2011 Non-Equity Jeff Award for *Cabaret* (Hypocrites). Alison won non Equity Jeff awards for *Time and the Conways* (Griffin) in 2006 and *Leonce und Lena* (Hypocrites) in 2005. Alison is a graduate of Northwestern University. She is a company member of The Hypocrites, an Artistic Associate with

PROFILES (CONTINUED)

Lookingglass and an Associate company member of Steep Theatre. Check out her work at alisonisple.com.

CHRISTINE A. BINDER (Lighting Designer/Artistic Associate) has designed for Writers Theatre, The Steppenwolf Theatre Company, Chicago Shakespeare, The Court, Northlight, the McCarter Theatre, Hartford Stage, and the Oregon Shakespeare Festival. Her opera designs include work at the Lyric Opera of Chicago, Chicago Opera Theatre, San Diego Opera, New York City Opera, Pittsburgh Opera, and Houston Grand Opera. Recent designs include: *Hedda Gabler* for Writer's Theatre, *4000 Miles* for Northlight Theatre, and *Falstaff* for San Francisco Opera. Upcoming productions include: *Eugene Onegin* for the Grand Theatre de Geneve and *The Magic Flute* with the DePaul Opera Theatre. Ms. Binder has been nominated for Jeff Awards for her work with the Court, Northlight and Lookingglass. She is the Head of Lighting Design at The Theatre School at DePaul University.

RAY NARDELLI (Sound Designer/Production Affiliate) Past Lookingglass credits include *Eastland* (A New Musical), *Hephaestus*, *The Brothers Karamazov*, *Lookingglass Alice*, *Hillbilly Antigone*, *La Luna Muda*, *Lookingglass Hamlet*, *The Great Fire* (Jeff Nomination) and *Brundibar*. Other credits include work at Steppenwolf Theatre Company, Court Theatre, Congo Square Theatre Company, American Theater Company, Chicago Shakespeare Theater, Northlight Theatre, Drury Lane Theatre Oakbrook, Victory Gardens Theater, The Gift Theatre Company and Dolphinback Theatre Company. Off-Broadway credits include Lookingglass Alice at The New Victory Theater. His regional credits include work at Dallas Theatre Center, Syracuse Stage, Alliance Theatre, Actors Theatre of Louisville, McCarter Theatre Center, Long Wharf Theatre, Milwaukee Repertory Theater, Arena Stage, Hartford Stage Company, Alley Theatre, Meadow Brook Theatre, Notre Dame Summer Shakespeare, American Girl Theatre (New York, Chicago). 4 Jeff Awards- 8 nominations. Production work on more than 20 Broadway tours and pre-Broadway runs. He has designed sound for more than 400 films, television programs, DVDs and computer games worldwide. Ray lives in Chicago with his wife Lynn and two children, Elliot and Olivia.

SARAH BURNHAM (Properties Designer) is pleased to return to Lookingglass where she recently designed props for *In the Garden*. Recent projects include: Production Manager for the 2014 Summer Season at Peninsula Players; Props Master for *Far Away* as part of the SITE project at Northwestern University; Production Manager for *American Myth* with American Blues Theater (ensemble member);

Properties master for *Chapatti*, *Tom Jones* and *Detroit '67* at Northlight Theater.

SYLVIA HERNANDEZ-DISTASI Choreographer/Artistic Associate is co-Artistic Director of The Actors Gymnasium in Evanston where she's been teaching the art of circus since 1995. Sylvia has been an Artistic Associate of The Lookingglass Theatre Company since 1999. She has won three of her four Jeff Awards for choreography for the company's productions of *The Baron in the Trees*, *Hard Times*, and *Lookingglass Alice*. Other theater credits include Lyric Opera, Chicago Children's Theater, Marriott Lincolnshire (where she won her fourth Jeff Award), and Steppenwolf Theatre, among others. Sylvia enjoys the luxury of being able to work with her husband Larry, and son Griffin on countless productions at The Actors Gymnasium. Sylvia is a recent recipient of The 3Arts Award for Design.

LEE BRASUELL (Rigger) is once again thrilled to be invited to join the Lookingglass team on the production of *Lookingglass Alice*. His previous Lookingglass Aerial work includes, *Cascabel*, *The Little Prince*, *Hephaestus*, *Peter Pan* (A Play), and *Fedra*. Lee is an Assistant Professor of Production Management and Technical Direction for Oklahoma State University (Go Pokes) and is currently researching new circus and performer apparatus based on mathematical principles. Other Chicago area credits include the production design for *Shear Madness* at The Legendary Chicago Theatre, Production Artist for *Cirque Shanghai Bai Xi*, Scenic Design for TATC's *Noises Off*, and Special Effects design for *Evil Dead: The Musical* at MVCC.

JERI FREDERICKSON (Production Stage Manager) is excited to return to the Lookingglass family where she has worked on *In the Garden*, *North China Lover*, *Big Lake Big City*, and *Lookingglass Alice*. Recent stage management credits include musicals and new works at TimeLine, Drury Lane, Chicago Children's Theatre, and Barrington Stage Company. She received a Bachelor of Arts from Hope College. She is an ensemble member and Associate Artistic Director at Irish Theatre of Chicago.

MARY HUNGERFORD (Assistant Stage Manager) is excited to return to Lookingglass after interning on *Ethan Frome*. Stage Management credits include *Ironbound*, *Buena Vista*, *The Drunken City*, *Penelope*, and *The March* (Steppenwolf Theatre); *The How and the Why* (TimeLine Theatre), *CPS! Othello* and *CPS! Hamlet* (Chicago Shakespeare Theatre); *Godspell*, *Tartuffe*, *Parade*, and *Noises Off* (Northwestern University). Production Management

PROFILES (CONTINUED)

credits include *She Kills Monsters* (Buzz22/Steppenwolf Garage Rep); *Selections from Rogers & Hammerstein's Carousel* (Theater Wit); *The 2014 SITE Festival* and *Ragtime* (Northwestern University). Endless thanks to Jeff and Kelley.

ANDREW WHITE (Artistic Director/Ensemble Member) has participated as an actor, writer or director in more than thirty Lookingglass productions, most recently appearing in *In the Garden: A Darwinian Love Story*. He wrote the book and lyrics for *Eastland: A New Musical*, received a Joseph Jefferson Award for his 2004 adaptation of George Orwell's *1984*, and wrote and directed *Of One Blood* in 1989. He has taught in various Lookingglass Outreach programs and residencies, and co-founded Mosaic Experience, a company which uses an arts-based approach to dialogue about diversity. His family in Evanston includes one wife, Shari; two children, Julia and Asher; and one cat named Jane.

RACHEL E. KRAFT (Executive Director) is in her tenth season as the Executive Director of the Lookingglass Theatre Company. Her 25 years of experience in arts management include over a decade as director of development at the Goodman Theatre, in addition to key roles with the Arts and Business Council, Northlight Theatre and the Chicago Dance Coalition. Rachel is a charter board member of the documentary film organization the Kindling Group, a trustee of the Jewish Women's Foundation of Chicago, and serves on the Alumnae Council of the Chicago Foundation for Women. She is Vice Chair of the League of Chicago Theatres and is an emeritus board member and past Vice President of the Theatre Communications Group, the local and national service organizations for theater.

PHILIP R. SMITH (Producing Artistic Director/Ensemble Member) most recently appeared as Bass in *Big Lake Big City* at Lookingglass and Wrede Sartorius in *The March* at Steppenwolf Theatre. Other Lookingglass credits include Ethan in *Ethan Frome*, Will in *Trust*, Phileas Fogg in *Around the World in 80 Days*, Ivan in *The Brothers Karamazov*, Tinker Bosch in *The Wooden Brecks* and Creon in *Hillbilly Antigone*. Other recent credits include Atticus Finch in *To Kill a Mockingbird* and Rev. Parris in *The Crucible* both at Steppenwolf and Fogg in *Around the World in 80 Days* at Baltimore's Center Stage. Other regional credits include work at the McCarter Theatre, Seattle Rep, the Arden Theatre, BAM (NYC), and The Actors Gang (LA). TV and film credits include "Boss," "Friends," "Prison Break," "Chicago Hope," "Early Edition," *Kissing a Fool*, *Since You've Been Gone*, *High*

Fidelity, *The Express* and *The Dilemma*. As Producing Artistic Director, oversight includes Lookingglass casting and serving as a primary artistic liaison to the Development, Special Events, Marketing and Production departments.

HEIDI STILLMAN (Director/Artistic Director of New Work/Ensemble Member) Most recently directed *Death Tax* and co-created and co-directed *Cascabel*, in collaboration with Tony Hernandez and Rick Bayless. She has both written and directed for Lookingglass: *The North China Lover*, *Hephaestus*, in collaboration with Tony Hernandez; *The Brothers Karamazov* (2009 Raven award); *Hard Times* (5 Jeff awards including director, new work, and production; also produced at the Arden in Philadelphia); *The Master and Margarita* (Jeff nominated). Additional writing credits with Lookingglass: *The Last Act of Lilka Kadison* with Nicola Behrman, David Kersnar, Abbie Phillips and Andy White; *The Old Curiosity Shop* with Laura Eason and Raymond Fox (Jeff award for adaptation), and *The Baron in the Trees* with Larry DiStasi (Jeff nominated). Directing work with Lookingglass includes *Bengal Tiger at the Baghdad Zoo*, *Trust*, *The Wooden Brecks*, and *Hillbilly Antigone*. Heidi's adaptation of *The Book Thief* premiered at Steppenwolf Theatre in 2012. Additionally, Heidi has staged Laura Eason's *Around the World in 80 Days* at Kansas City Repertory, and Mary Zimmerman's *The Arabian Nights* at Berkeley Repertory. She lives in Chicago with her husband and her eleven year olds, Sadie and Jude.

THE ACTORS GYMNASIUM is dedicated to bringing a new physicality to the American Theatre. Encouraging ground-breaking theatrical exploration, The Actors Gymnasium teaches circus arts, physical theatre and multi-disciplinary performance to children and adults; produces original, daring works of circus-theatre; and serves as a talent resource, providing performance opportunities to our students and innovative professional event entertainment for a wider audience. At The Actors Gymnasium, people Learn To Fly - physically, emotionally, and creatively. Learn more about The Actors Gymnasium at www.actorsgymnasium.org

SPECIAL THANKS

Evan Hatfield and Steppenwolf Theatre Company, Kate Johnson Artistry, Athena Mayo, Larry DiStasi, Sylvia Hernandez-DiStasi, Virginia Nugent and The Actors Gymnasium.

ABOUT LOOKINGGLASS

Inventive. Collaborative. Transformative. Lookingglass is home to a multi-disciplined collective of artists who create original, story-centered theatre through a physical and improvisational rehearsal process centered on ensemble. Lookingglass has staged 62 world premieres and garnered numerous awards in its mission to change, charge and empower audiences and artists alike. Lookingglass Education and Community programs encourage creativity, teamwork and confidence with thousands of students and community members each year. In 2003, Lookingglass Theatre opened in Chicago's landmark Water Tower Water Works. In 2011, Lookingglass received the American Theatre Wing's Tony Award® for Outstanding Regional Theatre.

LOOKINGGLASS COMPANY MEMBERS

Ensemble

Eva Barr	Kevin Douglas	Doug Hara	Philip R. Smith
Mara Blumenfeld	Christine Mary Dunford	David Kersnar	Heidi Stillman
J. Nicole Brooks	Laura Eason	John Musial	Tracy Walsh
David Catlin	Anthony Fleming III	Daniel Ostling	Andrew White
Thomas J. Cox	Raymond Fox	David Schwimmer	Temple Williams III
Lawrence E. DiStasi	Joy Gregory	Joey Slotnick	Mary Zimmerman

Artistic Associates

Kareem Bandealy	Tony Hernandez	Andre Pluess	Troy West
Chris Binder	Lauren Hirte	Scott Silberstein	Lindsey Noel Whiting
Sara Gmitter	Joshua Horvath	Rick Sims	
Sylvia Hernandez-DiStasi	Eric Huffman	Alison Siple	
	Louise Lamson	Lisa Tejero	

Production Affiliates

Patia Bartlett	Eva Breneman	Mele Ortiz	Ben Spicer
Brian Sidney	Jason Burkett	Sage Reed	Jonathan Templeton
Bembridge	Ray Nardelli	Nick Rupard	

Introducing the new
LookingglassTheatre.org

lookingglass

Thanks to our collaborators.  



ENSEMBLE UPDATE

EVA BARR recently played Dr. Alice Howland in *Still Alice*. She has returned to her farm, DreamAcres, in Minnesota for another season of growing vegetables, baking pizzas, and hosting arts retreats, camps and performances (see www.dreameryruralartsinitiative.com).

J. NICOLE BROOKS recently appeared in *Death Tax* at Lookingglass.

THOMAS J. COX last appeared in Lookingglass' production of *Cascabel* at the Goodman. He can be seen in *Richard III* at the Next Theatre this winter.

LAWRENCE E. DISTASI most recently appeared as Bacchus in Lookingglass' *Metamorphoses*. He directed *The Magical Exploding Boy* and *The Invisible Circus* last spring at The Actors Gymnasium in Evanston, where he serves as Co-Artistic Director.

CHRISTINE MARY DUNFORD most recently directed her own adaptation of *Still Alice* at Lookingglass. She continues to work on The Memory Ensemble, and as director of the School of Theatre & Music at UIC.

LAURA EASON's projects for 14/15 include: *Sex with Strangers* in DC, Australia and Buenos Aires and *The Undeniable Sound of Right Now* in NYC. Laura recently finished her second season on "House of Cards." www.lauraeason.com

RAYMOND FOX recently appeared in *Death Tax* at Lookingglass.

JOY GREGORY is writing and producing the ABC Family series "Switched at Birth." She is currently adapting her play, *The Shaggs: Philosophy of the World* for a feature film.

DOUG HARA recently co-directed and starred in *The Cat in the Hat* at The Arden Theatre in Philadelphia.

DAVID KERSNAR recently wrote and directed *The Seventh Love*, for Natya Dance Theatre, *Adventures with Aladdin* for the Chicago Symphony and is co-writing a family version of *The Barber of Seville* for the Chicago Lyric Opera.

JOHN MUSIAL recently provided scenic restraint for *Death Tax* at Lookingglass.

DAVID SCHWIMMER recently directed *Big Lake Big City* at Lookingglass as well as Laura Eason's *Sex With Strangers* at Second Stage in NYC.

JOEY SLOTNICK will be starring in the American Premiere of Moira Buffini's *Dying For It* at the Atlantic Theatre Co. in NYC this fall.

TRACY WALSH will appear in *Iphigenia in Aulis* this fall at Court Theatre. She will also serve as choreographer for the production. Tracy recently appeared in/choreographed *The North China Lover* at Lookingglass.

TEMPLE WILLIAMS III is Chief Operating Officer of 51 Minds Entertainment (an Endemol Company), a Los Angeles based production company focused on non-scripted television. Additionally, Temple is Chief Executive of Freedom Media, a company dedicated to financing independent feature films (credits include, *The Forger* and *Maggie's Plan*). Temple lives in Los Angeles with his wife, photographer and entrepreneur Cyndi Finkle, and their daughter, Sullivan Clare Williams.

MARY ZIMMERMAN will be taking her show *The White Snake* to China to the Wuzhen Theatre Festival this fall having recently completed a run at the Guthrie Theater in Minneapolis.

For **MARA BLUMENFELD**, **DAVID CATLIN**, **KEVIN DOUGLAS**, **ANTHONY FLEMING III**, **DANIEL OSTLING**, **PHILIP R. SMITH**, **HEIDI STILLMAN**, and **ANDREW WHITE** see the PROFILES section.

LEARN TO FLY



**the actors
gymnasium**
Circus & Performing
& Arts School

\$25 off for new students* with promo code: **LookingglassAlice**

Classes for Adults & Children include:
Aerial Arts • Circus Arts • Circus Fitness • Contortion
Gymnastics • Parent/Tot Circus • Parkour... & much more!

**Camps & Workshops excluded. Classes are subject to availability.*

We also provide event entertainment!

Just off the Noyes purple line 'L' stop
www.actorsgymnasium.org 847-328-2795

SUPPORT LOOKINGGLASS

We invite you to join the donor family that helps bring theatre to life on stage and in the classroom.

Lookingglass Theatre Company depends on the generous, ongoing investment of its donors and patrons to create innovative and artistically excellent theatrical productions, and to share its ensemble-based techniques with underserved youth in the Chicago community. These tax-deductible contributions bridge the gap between ticket sales and the actual costs of Lookingglass programming.

We invite you to be part of the collaboration that makes great theatre possible by donating to Lookingglass Theatre Company. Whatever the amount, your gift will help sustain the breadth and quality of Lookingglass' work, both onstage and in the community. **To make a donation by phone or for more information on making a gift, please contact the Development Department at 773.477.9257 ext. 122. Donations can be addressed to 875 N. Michigan Ave. Suite 1430, Chicago, IL 60611.**

PRODUCTION SPONSORS



**Elizabeth F. Cheney
Foundation**



**National
Endowment
for the Arts**
arts.gov



SEASON SPONSORS



**MacArthur
Foundation**

PARK HYATT CHICAGO*
ON WATER TOWER SQUARE

PARK HYATT NEW YORK*



STS FOUNDATION

CORPORATE & FOUNDATION SUPPORTERS

Eminent and Leading Benefactors



Landmark Benefactors



Cornerstone Benefactors



GOVERNMENT SUPPORTERS



BOARD OF DIRECTORS

CHAIRMAN
Joe Brady

PRESIDENT
John McGowan

VICE PRESIDENTS
Edward Filer
Jon Harris
Nancy Timmers

TREASURER
Rocque E. Lipford

SECRETARY
Jill Reznick Meier

ARTISTIC DIRECTOR
Andrew White

EXECUTIVE DIRECTOR
Rachel E. Kraft

IMMEDIATE PAST CHAIRMAN
Richard A. Ditton

CHAIRMAN EMERITUS
Lisa Naparstek Green

Ernie A. Arias
Gerry Barad
Leigh Buchanan Bienen
Thomas Bolling
David Catlin
Richard Chapman
Frank M. Clark III
Lester M. Coney
Al DeVaney
Kathleen B. Fanning
Roe Faraone
Charlie Frankel
Julie Gardziola
Kathleen S. Gaynor
Lee Golub
Paul Gray
Michael Jacobson
Dr. Elena Kamel
Lindsay Knight
Laura Matalon
Melinda McMullen
Dr. Maria Mendelson
Thomas O'Neill
Robert Palffy
Dr. Abbie Roth
Darren Snyder
Jeffrey Steigelman
David Sulaski
William A. Vainisi
Diane Whatton
Charlotte B. Whitaker

NATIONAL COUNCIL
Billy Dec III
Carol Genis
Todd Leland*
J. Scot Pepper*
Kevin Rochford*

EMERITUS COUNCIL
Geoffrey Baer
Liz Barrett
Richard Bromley
Julie Foley
Celia G. Leventhal
Timothy Malishenko
Alex Miller*
Donna Schatt
Matthew Smith
Lane Winter Vanderslice
Dr. Annabelle Volgman
Arnold Widen, M.D.

* PRESIDENTS EMERITUS
Christine Mary Dunford
James Johnson
John Morris

JUNIOR BOARD

FOUNDER
Billy Dec III

PRESIDENT
Lindsay Knight

IMMEDIATE PAST PRESIDENT
Tai Duncan

VICE PRESIDENTS OF EVENT PRODUCTION
Kim Kocur and Jillian Tribbett

VICE PRESIDENTS OF SPONSORSHIP
Jennalee Reiff and Alicia Silva

VICE PRESIDENTS OF MEMBERSHIP
Cameron Croft and
Katheryn McMahon

VICE PRESIDENT OF MARKETING & PR
Jessica Barutia

SOCIAL COMMITTEE CHAIR
Jordan Rummel

TREASURER
Julie Milligan

SECRETARY
Jason Gloye

VOLUNTEER COMMITTEE CHAIR
Molly Beran

MEMBERS
Samantha Akers, Lauren
Andresen, Jacqueline Charak,
Ryan Duffy, Jeff Dunlao, Ian
Gray, Jason Griffith, Katherine
Griffith, Courtland Hickey,
Victoria Kent, Adam Kraft,
Kimberly Kuehl, Jameson
LaMarca, Steve McQuown,
Ruthie Neumeier, Anna
Phalen, Carrie Phillips, Ashaki
Sailor, Adam Schomaker,
Heather Widell, and Jai
Winston

LOOKINGGLASS STAFF

ARTISTIC

ARTISTIC DIRECTOR
Andrew White

PRODUCING ARTISTIC
DIRECTOR
Philip R. Smith

ARTISTIC DIRECTOR OF NEW
WORK
Heidi Stillman

ASSISTANT TO THE ARTISTIC
DIRECTORS
Raymond Fox

LITERARY MANAGER AND
COMPANY DRAMATURG
Marti Lyons

DORIS DUKE ARTIST IN
RESIDENCE/DIRECTOR,
LOOKINGGLASS CIVIC
PRACTICE LAB
Michael Rohd

EDUCATION AND COMMUNITY PROGRAMS

DIRECTOR OF
EDUCATION AND
COMMUNITY PROGRAMS
Lizzie Perkins

MASTER TEACHER
Thomas J. Cox

EDUCATION ASSISTANT
Maria Maia

BUSINESS

EXECUTIVE DIRECTOR
Rachel E. Kraft

GENERAL MANAGER
Michele V. Anderson

ASSISTANT BUSINESS
MANAGER
Kathryn Dysard

IT MANAGER
Thomas Sparks

DEVELOPMENT

DIRECTOR OF
DEVELOPMENT
**Jennifer McCarthy
Bienemann**

COORDINATOR OF
INDIVIDUAL GIVING
Chelsea Wilson

COORDINATOR OF
CORPORATE, FOUNDATION
& GOVERNMENT GIVING
Luke Wilcox

FUNDRAISING EVENTS
COORDINATOR
Rachel McKee

DEVELOPMENT
COORDINATOR
Jill Bowarchuk

MARKETING

DIRECTOR OF MARKETING
Erik Schroeder

MARKETING MANAGER
Stephanie Shum

AUDIENCE SERVICES

MANAGER OF AUDIENCE
SERVICES
Kimberly Lawson

ASSISTANT MANAGER OF
AUDIENCE SERVICES
Ozzie Totten

BAR SUPERVISOR
Tamara Becker

GROUP SALES ASSOCIATE
Corinne Bass

AUDIENCE SERVICES
REPRESENTATIVES
**Jessica Martens
Dan Wenzel**

PRODUCTION

PRODUCTION MANAGER
Joel Hobson

TECHNICAL DIRECTOR
Chad Hain

ASSISTANT TECHNICAL
DIRECTOR
Ben Dawson

ADMINISTRATIVE AND
PRODUCTION ASSISTANT
Kelly Crook

WARDROBE SUPERVISOR
David Galbreath

MASTER ELECTRICIAN
Jeff Glass

SOUND ENGINEER
**Christopher M.
LaPorte**

ADMINISTRATIVE INTERNS
**Jazzlyn Luckett,
Kathryn Piotrowski,
Katherine Schwartz,
and Reed Sturtevant**

COUNSEL

PUBLIC RELATIONS BY
Cathy Taylor
Public Relations, Inc.

LEGAL SERVICES BY
**Edward Filer, Freeborn &
Peters, LLP**
Jean S. Ward

AUDITORS
**Baker Tilly Virchow Krause,
LLP**

COMPUTER CONSULTING BY
**Ted Giesler, Cypress
Consulting Group, Ltd**

VIDEO CONTENT BY
HMS Media
Stephanie Shum

MEDIA AGENCY
Allied Live

WEB DESIGN BY
Faust LTD

WEB DEVELOPMENT BY
One Design

2014-2015 SEASON ARTWORK BY
Heather Anderson

GRAPHIC DESIGN PRODUCTION BY
Athena Mayo

STRATEGIC PLANNING INITIATIVES
FACILITATED BY
Amanda Delheimer Dimond

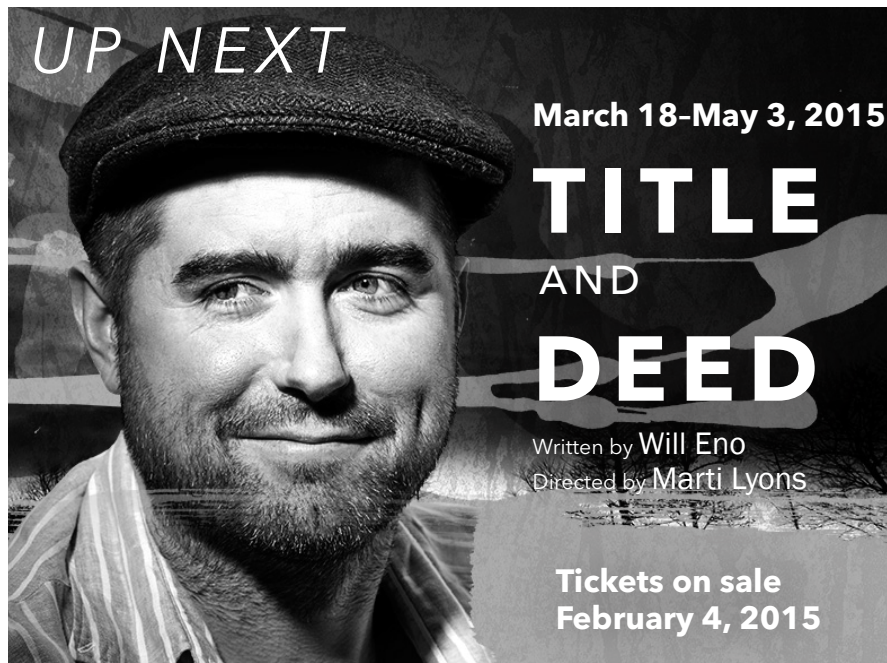
PRODUCING AND TOURING
CONSULTING BY
Jan Kallish

PHOTOGRAPHY BY
**Sean Williams
Liz Lauren**

PROGRAM PRODUCTION BY
Stephanie Shum

LOOKINGGLASS LOGO DESIGN BY
Elizabeth Kairys

PANEL DISCUSSIONS COORDINATOR
Jessica Lind



UP NEXT

March 18-May 3, 2015

TITLE AND DEED

Written by Will Eno
Directed by Marti Lyons

Tickets on sale
February 4, 2015



June 10 - August 9, 2015

MOBY DICK

Adapted and Directed by David Catlin
From the book by Herman Melville
Produced in association with The Actors Gymnasium

Tickets on sale
April 15, 2015

lookingglass

Call 312.3370665 or
visit LookingglassTheatre.org
for more information

DONORS

The Watermark Society

The Watermark Society provides the financial foundation for Lookingglass' innovative programming. Members enjoy VIP ticketing services, invitations to private events with Lookingglass Artists, and advance opportunities to purchase tickets. We are pleased to recognize contributions received September 1, 2013 to August 31, 2014. For more information contact **Jennifer Bienemann, Director of Development, at 773.477.9257 x103 or jbienemann@lookingglasstheatre.org.**

Landmark

A. Marek Fine Jewelry
Gerry Barad and
Margeaux Raymond
Betsy and Jim Benoit
Leigh and Henry Bienen
Joe and Shannon Brady
Douglas R. Brown
Joyce and Bruce Chelberg
Tom and Sally Connolly
Richard A. Ditton
Shawn M. Donnelley and
Christopher Kelly
Kathy and Kevin Fanning
Kurt and Rebecca Feaster
Ed and Dee Dee Filer
Kate Gaynor and Tim Dickey
Lee and Sandy Golub
Paul and Dedrea Gray
Lisa Naparstek Green and
Howard Green
Jon and Allie Harris
Elaine and Larry Hodgson
Michael and Alex Jacobson
Drs. Elena and Perry Kamel
Rocque and Anne Lipford
John McGowan and
Dave Robbins
Melinda McMullen and
Duncan Kime
Jill Reznick Meier and
Jonathan Meier
Todd and Susan Naccarato
Dan Ratner
Mark and Nancy Ratner

Abbie Helene Roth and
Sandra Gladstone Roth
Patrick G. and Shirley W.
Ryan Foundation
Darren and Anne Snyder
Lorraine and Steve Weiss
Diane and Chris Whatton
Charlotte B. Whitaker

Cornerstone

William and Sharon Baker
Joanne and Michael Balogh
Deborah A. Bricker
Ben and Frances
Collins-Sussman
Al DeVaney
Lisa and Geoffrey Dybas
Roe Faraone
Peter and Paula Fasseas
Michael and Valerie Foradas
Nancy and Sheldon Hoffman
Rachel E. Kraft
Helen Melchior
Marla Mendelson and
Stephen Wolff
Jordan and Jean Nerenberg
Family Foundation
James Oates and
Adam Grymkowski
Elise Paschen and
Stuart Brainerd
Jane Quinn and
Jeffrey McCarthy
Joan and Paul Rubschlager

George and Kathleen
Rummel
Donna Schatt
Rosemary J. Schnell
Kathleen and William Streff
Nancy and Michael Timmers

Milestone

Edgar Bachrach
Liz Barrett
Connie Calbeck
Karen and Tudy Connell
Patricia Cox
Jim and Sandy Freeburg
Dr. Paul Lisnek†
Pamela G. Meyer
Morton and Judy Pomeranz
Deborah and Stephen
Quazzo
Diana and Bruce Rauner
Lizzy and Josh Scheinfeld
Irena and Preston Simons
David Sulaski
Stephanie and John Tipton
Brady Twiggs
The Wilsons

Foundation

Anonymous
Stephanie and Dana Amett
Warren L. Batts
Maria Bechily and
Scott Hodes
Joseph and Mary Burns

Debra Cafaro
Michael Carter
Kay Collier
Les Coney
Jennifer Costanzo and
Jeffrey Roberts
Mary Jane and Tom Dee
Dr. J. Anthony Dillon
Paul Dykstra and
Spark Cremin
Sidney and Sondra Epstein
Blair Finberg Hoffman
Avram and Kerana Kraft
Howard Leamer and
Lauren Rosenthal
Timothy and Jane
Malishenko
Alice and Gregory Melchor
Douglas and Denise Nash
Sharon and Lee Oberlander
Thomas O'Neill and
Ann David
Lanny and Terry Passaro
Valeria and David Pruett
Raiselle and Kenneth
Resnick
Paul and Joanne Ruxin
Michael and Diana Sands
Mary Beth Shannon
Nikki Will Stein and
Fred Stein
Jon and Jane Stillman
Scott Turow
Leslie and Robert Zentner

The benefactors of THEATRE THAT MOVES: THE CAMPAIGN FOR LOOKINGGLASS

THE BIG DOG FUND

Flyspace contributed in honor of Jill Reznick Meier

HOPE ABELSON*

RICHARD DITTON

Contributor of the women's restroom

THE GREEN FAMILY

Howard Green & Lisa Naparstek Green
David Green* & Mary Winton Green

JP MORGAN CHASE

Contributor of the Studio Theatre

BURTON* & ANNE KAPLAN
DOLORES KOHL KAPLAN & MORRIS KAPLAN*

THE LELAND FAMILY

Contributors of the chimney passageway

LOOKINGGLASS ENSEMBLE FRIENDS & FAMILY
Contributors of the Compass Room

LOOKINGGLASS JUNIOR BOARD
Contributors of the box office

MELINDA MCMULLEN

Contributor of the women's dressing room

THE NORTHERN TRUST COMPANY

Contributor of the balcony

LORI & J. SCOT PEPPER

DAVID L. SCHWIMMER

Sound system contributed in honor of Syd & Mac Colman; Lighting System contributed in honor of Bea and Bert Schwimmer*

NANCY AND MICHAEL TIMMERS

Contributors of the men's dressing room

DONORS (CONTINUED)

Lookingglass Theatre Company gratefully acknowledges the generosity of the many individuals, corporations, foundations and government grantors who support Lookingglass and its innovative artistic and education programs.

We are pleased to recognize contributions received September 1, 2013 to August 31, 2014. We work diligently to keep our donor lists accurate and up-to-date. Please bring any unintentional errors, additions or needed corrections to the attention of the **Development Office at 773.477.9257 x122.**

Corporate, Foundation and Government Supporters

Magnificent Benefactors (\$500,000 and up)

City of Chicago
Mayor Rahm Emanuel
State of Illinois:
Department of Commerce
and Community Affairs

Eminent Benefactors (\$100,000-\$499,999)

Alphawood Foundation
Doris Duke Charitable
Foundation
United Airlines

Leading Benefactors (\$50,000-\$99,999)

Allstate Insurance Company
ComEd
John D. and Catherine T.
MacArthur Foundation
Polk Bros. Foundation

Landmark Benefactors (\$25,000-\$49,999)

A. Marek Fine Jewelry
BMO Harris Bank
Clark Hill PLC

Crown Family Philanthropies

Grosvenor Capital
Management LP
The Hillshire Brands
Company
KPMG
Lloyd A. Fry Foundation
National Endowment for the
Arts: Art Works
Northern Trust
PNC Bank
Steiner Electric Company
Betsy and Jim Benoit on
behalf of the STS
Foundation

Cornerstone Benefactors (\$15,000-\$24,999)

Paul M. Angell Family
Foundation
Efroymsen Family Fund
Golub & Company
JPMorgan Chase
The Milne Family Foundation
Prince Charitable Trusts
The Harold and Mimi
Steinberg Charitable Trust

Distinguished Benefactors (\$10,000-\$14,999)

Accenture Technology
Adrian Smith + Gordon Gill
Architecture
Deloitte
Elizabeth F. Cheney
Foundation
Goldman Sachs
HBK Engineering
Illinois Arts Council
INTREN
Joseph and Bessie Feinberg
Foundation
Katten Muchin Rosenman
LLP
Marsh
Primera Engineers
Rooney, Rippie, Ratnaswamy
LLP
Splash & The Sun-Times
Walgreens
Wintrust Financial

Producing Benefactors (\$5,000-\$9,999)

Anonymous
Ariel Investments

Baxter International Inc.
John R. Halligan Charitable
Fund
James S. Kemper
Foundation
Mesirov Financial
The Pauls Foundation
Ruth Davee Foundation
Dr. Scholl Foundation
The Siragusa Foundation

Directing Benefactors (\$2,500-\$4,999)

Evian
Irving Harris Foundation

Participating Benefactors (\$1,000-\$2,499)

Angostura Bitters
Department of Cultural
Affairs and Special Events
Sidley Austin Foundation
Wrightwood Neighbors
Conservation Association

Individual Supporters

\$100,000 and above
Richard A. Ditton

\$50,000 to \$49,999
Nancy and Michael
Timmers

\$25,000 to \$49,999
Gerry Barad and
Margeaux Raymond
Leigh and Henry Bienen
A. Marek Fine Jewelry
Lee and Sandy Golub
Paul and Dedrea Gray
Melinda McMullen and
Duncan Kime
David L. Schwimmer and
Zoe Buckman

\$10,000 to \$24,999
The Big Dog Fund
Joe and Shannon Brady
Douglas R. Brown
Joyce and Bruce Chelberg
Shawn M. Donnelley and
Dr. Christopher M. Kelly
Kathy and Kevin Fanning
Joseph and Bessie Feinberg
Foundation
Ed and Dee Dee Filer
Thomas Gallagher
Kate Gaynor and Tim Dickey
Lisa Naparstek Green and
Howard Green
Elaine and Larry Hodgson
Drs. Elena and Perry Kamel
Jeremy and Vered Kaufman
Christopher and Erin Keogh

John McGowan and
Dave Robbins
Bill and Nadine O'Malley
Anne Pramaggiore and
Michael Harrington
Dan Ratner
Abbie Helene Roth and
Sandra Gladstone Roth
Lizzy and Josh Scheinfeld
Darren and Anne Snyder
Char Whitaker
\$5,000 to \$9,999
Mark and Allie Brenner
The Andrew H. Chun
Memorial Scholarship
Fund
Tom and Sally Connolly
Billy and Katherine Dec

Roe Faraone
Peter and Paula Fasseas
Kurt and Rebecca Feaster
Nancy and Sheldon
Hoffman
Michael and Alex Jacobson
Rachel E. Kraft
Rocque and Anne Lipford
Jill and Jonathan Meier
Marla Mendelson and
Stephen Wolff
M+M Murzanski
Todd and Susan Naccarato
Mark and Nancy Ratner
Joan and Paul Rubschlager
Patrick G. and Shirley W.
Ryan Foundation
Rosemary J. Schnell
Beth and Matthew Smith

*We gratefully acknowledge our deceased donors.

DONORS (CONTINUED)

Steve Stratton
Lorraine and Steve Weiss
Diane and Chris Whotton

\$2,500 to \$4,999

William and Sharon Baker
Joanne and Michael Balogh
Regina Belmonte
Steve Berg
Pam Brady and
Robert Miller
Elise Paschen and
Stuart Brainerd
Deborah Bricker
Richard and Mindy
Chapman
Guy Chipparoni
Ben and Frances
Collins-Sussman

Al DeVaney
Lisa and Geoffrey Dybas
Valerie and Michael
Foradas

Jon and Allie Harris
Deborah Hirt
Jared Kaplan
Mac MacLellan
John Mahoney
Laura Matalon and
Spencer Waller
Helen Melchior
Jordan and Jean Nerenberg
Family Foundation
James Oates and
Adam Grymkowski
Sharon and Lee Oberlander
Meredith and Dan O'Connor
Thomas O'Neill and
Ann David

Joseph and Maria
Pieranunzi
Jane Quinn and
Jeffrey McCarthy
Jeffrey and Eileen Richards
Glen Rippie
Kevin Rochford
George and Kathleen
Rummel
Donna Schatt
Michael and Kimberly
Sessa
Kathleen and William Streff

\$1,500 to \$2,499

Edgar Bachrach
Liz Barrett
Mary Jo and Doug Basler
Connie Calbeck
Kay Collier
Karen and Tuey Connell
Patricia Cox
Mary Dempsey
John Forrest
Jim and Sandy Freeburg

Doug Hara
Vicki and Bruce Heyman
Alain Lecoque
Dr. Paul Lisnek†
Fidel Marquez
Pamela G. Meyer
Kenneth and Anne Miller
Susan and Gary Milligan
Morton and Judy Pomeranz
Stephen and Deborah
Quazzo
Diana and Bruce Rauner
Jana Schreuder
Irena and Preston Simons
Nicholas Stone
David Sulaski
John and Stephanie Tipton
The Wilsons

\$1,000 to \$1,499

Anonymous (2)
Pat and Howard Adelman
Stephanie and Dana Arnett
Warren L. Batts
Maria Becchili and
Scott Hodes
Debra Cafaro
Michael Carter
Peter Chun
Les Coney
Jennifer Costanzo and
Jeffrey Roberts
Tom and Mary Jane Dee
Dr. J. Anthony Dillon
Paul Dykstra and
Spark Cremin
Sondra Berman Epstein
and Sidney Epstein
Don Ferguson
David Hoesle and
Joan Brady
Blair Finberg Hoffman
Travis Hughes
Jill Javors
Karen Kmetik
Howard Learner and
Lauren Rosenthal
Larry Levine
Ed Loeb
Timothy and Jane
Malishenko
Alice and Gregory Melchor
Scott Mulcahy
Douglas and Denise Nash
The Parks
Lanny and Terry Passaro
David and Valeria Pruett
Raiselle and Kenneth
Resnick
Joanne and Paul Ruxin
Michael and Diana Sands
Jim and Mary Beth Hamlin
Shannon
Fredric and Nikki Will Stein

Jon and Jane Stillman
Scott Turow
Brady Twiggs
Leslie and Robert Zentner

\$500 to \$999

Anonymous
Constantine and Voula
Alexandrakis
Mr. and Mrs. Brian S.
Arbetter
Ernie Arias and
Michael Feldman
Paul and Allison Bartusiak
James and Elizabeth Biery
Scott Brainerd and
Lynnea Bauer
Kathi Brown
Janet V. Burch
Jennie Lyons Fogarty
Margaret Fogarty
Jerry Freedman and
Elizabeth Sacks
Ethel and Bill Gofen
Michael Goldberger†
Sharran Greenberg
Alice Greenhouse
Timothy Hefferon
John Herrold and
Bregan Wherry
Vicki and Bill Hood
Adam and Caroline Ith
Tim and Monica Jaster
Lynn and George Jones
Debbie and Jack Kelleher
Rosemary Krimbel and
John Garton
Jim and Barb Lapetina
Carol Lizano
Kelly Llorens
Nona and John Long
David Macknin
Drs. Annette and John
Martini
Jared May
Janet Melk
Gary Metzner and
Scott Johnson
Barbara and Daniel O'Keefe
Elisabeth O'Neill
Sally L. Park
Marie Peebles
Claire and Gordon Prussian
Virgil Reid and
Ryan Endress
Bill Savage
Renee and Michael Sichlau
Langhorne and Marilyn
Smith
Sy Sussman
Sharon Szeszycki DDS and
Mark Danhoff
Kevin Tobin
Joe Trpik

Dr. Sabrina Tsao
Matthew Turk
Jean Morman Unsworth
Donald and Sylvia White
Susan J. White
George Williams
Scott and Nicole Wilson

\$250 to \$499

Josh Aldama
John and Mary Alukos
Paul Andrews
Tyler Anthony
Donna Baiocchi
Mary Hynes-Berry and
Gordon Berry
Tom Bowen
Lin Brehmer and Sara Farr
Janet Carl Smith and
Mel Smith
Devira Chartrand
Martin and Jane Clarke
Marcia S. Cohn
Chanel Coney
John Danaher
Charles Deberry
Red Delaney
Terry Donnelly
Bernie Dowling
Steven B. Edelstein, MD
Mr. Bob Faust
Sally Fletcher
Timothy and Janet Fox
Douglas and Katherine Frey
Susan Mabrey Gaud
Jim Gauger
Jason and Katherine Griffith
Carol and Solomon
Gutstein
Elaine S. Hacker
Jerry and Patty Hanner
Diane and Sol Hara
Paula and David Harris
Mary J. Hayes
Dr. Leo Henikoff
Jamie Revord and
Brian Hettinger
Lou Hiotis
David G. Holmes and
Kathy Garland Holmes
Tom and Margie Hurwich
Hamilcar Barca
Stephen H. Johnson
Todd and Jenn Jones
Judith and Jerry Kaufman
Jeff and Karen Ketchen
Claire Keys
Tom Kinder
Alexis and Andy Kniaz
Catherine and Douglas
Knuth
Rhonda Kokot
Tony and Helen Kwan
Cindy and Jim Lamson

DONORS (CONTINUED)

Fran and Chuck Licht
Katherine Logue
Sherry and Mel Lopata
Patrick Lynch
Cathleen R. Marine
R. David Matthews
The Morris and Helen
Messing Foundation
Pete Mihelich
Sue Ciezki and Tom Mikrut
Elizabeth Miller
Claire Miller
Blake Moritz
Carol Nulman
Bruce Oltman and
Bonnie McGrath
Leslie Oster and
Daniel Rodriguez
David Perez
Ellen and Fraser Perkins
Mark and Gail Prete
Jennalee Reiff
Rachel Remke
Wanda and Jim Roberts
Ms. Jeanne Sainati
Kathy Scherer
Cynthia and Mike Scholl
Carol and Dean Schroeder
Roche Schuller and
Mary Beth Fisher
Michael Schwartz
Jane A. Shapiro
Barnet Sherman
Terri and Rich Smith
Rand Sparling and
Adrienne Meisel
Sue E. Stealey
Laura Stein
Kimberly Taylor
Pat and Deb Turski
Anne Van Wart and
Michael Keable
Lane Winter Vanderslice
and Elaine Mohamed
Sarita Warshawsky
Arnie and Judy Widen
Barb Williams
Linda and Dennis Wilt
Susan Wolz
Patricia Wyant
David and Elizabeth Zott

\$100 to \$249

Anonymous (4)
Sam Adam
Christiana and Oluwatope
Adesanya
Samantha Akers
Daniel and Andrea Alpert
Peter Altieri
Lauren Andresen
Jeffrey Arena
Drew Aveling
Alisa Azpeiti

Rossann Baker-Priestley
Mike and Mary Baniak
Jessica Barrutia
Dinah Barthelmess
Susan J. Berg
Larry Bernstein
Arta and Adrian Beverly
Jennifer and Robin
Bienemann
Leslie Bond
Aldridge and Marie
Bousfield
Molly Boyden
Robert Bradbury
Mark Braun
Mrs. Juliene Britz and
Dr. Sofya Asfaw
Thomas F. Broderick
Arnold and Adrienne
Brookstone
Joel Brosk
Larry and Susanne
Broutman
Robert and Sidney Brush
Carolyn S. Bucksbaum
Barbara Burkett
John F. Byrd
Karen A. Callaway
Roger and Virginia Carlson
Wendy Cartland
Jacqueline Charak
Lorry and Sandra Charak
Tim Christopher and
Olivia Lopez
Elaine Chun and
Brett Sherman
Michael Scott and
Joy Clendenning
Ann Cooper and
Larry Heinzerling
Jim Corrigan
Mary Alice Costello
Ben and Tricia Cox
Lucas Crawford
Thomas and Barbara Crays
Cameron Croft
John and Monique Crossan
Rosemary Crowley
Nancy and Joseph Crowther
Bruce and Laurie Davidson
Jo Anne Davis
Phyllis Deerinck
Patty Delony
Milton Diller
Judith Docekal
Pat and Richard Doonan
Rosanne Druian
Ryan Duffy
Vicki Dufour
Tai Duncan
French and Jan Eason
Larry Eclov
EHS Business Solutions
Sherry Emery

Tim and Jane Evans
Mr. John Falkenholm, Jr.
David Fields
Robert and Kathleen Fife
Susan Fiore
Jean and Bill Fischer
Jan and Bill Flapan
Susan Flynn
Paul Fong
Joan and Ron Fox
Father Mark A. Fracaro
Hilary Freeman
Leota P. Gajda
Patricia and Melvin Gerbie
Jeri and Keith Gertzman
Elise Giannasi
Rosemary Gilmore
Jennifer Gladstone
Deidra Gold
Gomberg, Sharfman, Gold
and Ostler
Slusar-Goldman Family
Ella and Scott Goldstein
Charles and Phyllis
Goodman
Stacy Goodman
Miriam and Barry Green
Aaron Greven
Lynn and Steven Gryll
Robert S. Guenther
Joan and Guy Gunzberg
Ben Hadelma
Sarah R. Wolff and
Joel L. Handelman
Michael Hansen and
Nancy Randa
Steven and Lenore Harris
Leslie and Christine Hart
Angeline Heisler
Tom and Ginny Helm
Joyce Herdliska
Dawn Hillman
Jim Hilly and Nancy Griffin
Linda Hime
Jim and Eileen Holzhauser
Sheldon Holzman
Ms. Marlene Hopmayer
Dr. and Mrs. Bob Hsiung
Barbara Huyler
Segun and Angel Ishmael
Anthony and Kathleen Janik
Marcianne Zajeski
Karen and Jerry Johnson
Pat Johnson
Rebecca Johnston
Debra Juarez
Jan Kallish
Ben Katz
Allen Katz
Lois Kaufman
Peggy Kelly and Dan Dutile
Ms. Janet Kemper and
Janina Drwila
Victoria Kent

Dr. Jack and Dr. Marilyn
Kessler
Shadi Khoshaba
Roger Kiley and
Dawn Goulet
Jennifer E. King
Diana and Neil King
Carol Kipperman
Lindsay Knight
Kimberly and Robert Kocur
Michael and Nancy
Koenigsknecht
Fiona Kogan
Adam Kraft
David Kronman
Kimberly Kuehl
The Kulich Family
Dolores A. Kunda
Patricia I. Kwiatek
Jeanne Laduke
Jameson Lamarca
Marcy and Robert Lange
Jim and Laurel Lannen
Kathleen and Michael
Laporte
John Lawrence
Sylvie Legere
John and Jill Levi
Joan and Murray Levin
Phillip and Natalie Levin
Sharon and Bob Lindgren
Bruce Lockwitz
Annie Malone and John Loft
Andi Long
Roy Lundquist
Genevieve and Carlo
Maggio
David Mahvi
Katya Manak
Katherine Markham
Jennifer Marling
Inge Marra
David and Karen Mattenson
Stacey and Patrick
McCusker
Kathryn McMahon
Andrea M. McPike
Steve McQuown
Tyler Metcalf
Douglas Meyer
Chuck and Sylvia Meyers
Julie Milligan
Joe Moravy
Sheba Miller-Morris
Eileen M. Murray
Lester Murschell
Patricia R. Naguib
Marvin and Beth Najberg
Ruthie Neumeier
Craig Schuttenger and
Colleen O'Leary
Michael Oppenheimer -
Erickson and
Oppenheimer

DONORS (CONTINUED)

Katie Pacilio	Catherine Reiter	Leslie and Robert Shook	Jordin Tillich
Susan Padveen	Merle Reskin	June Shulman	Jillian Tribbett
Jim and Sue Pajakowski	Donna L. Robbins	Raymond Skowron	Gretchen Vacendak
Gil and Carolyn Parsons	Eleanor and Robert Roemer	Kathleen Polnik Sliter	Prabhu Velan
Sheldon Patinkin*	Larry Rogers	Cory A. Smith and Steve W. Klang	Marsie Wallach
Barbara and Richard Payne	Jordan Rummel	Steven and Deborah Soehlig	Dr. Claire Wang
Elyse Pearlman and Brad Techenbrock	Ashaki T. Sailor	Micki Somerman and Philip Zawa	John Welk
Anna Phalen	Ursula Sanne	Elaine Songy	Michael Wesbecher
Carrie Phillips	Mr. and Mrs. John Scala	Matthew Soraci	Andy White and Shari Joffe White
Phillips Family	Robert Schwartz	Jamil Soriano	Heather Widell
Richard Prinz	Jennifer and Philip Schwartz	Bonnie Spring, Ph.D.	Clifton J. Wilkow and Robert Kinslow
V. Pristera, Jr.	Jeff and Maggie Schwartz	Terry and Ruth Stevig	Janet and Les Wilson
Jerry H. Proffit	Jean Schwartz and Jesse Horvath	Constance Sulkin	Carrie Wilson
Jane Grady and Alan Pulaski	Jennifer and Travis Seal	Barbara Susin	Jai Winston
Wendy and Eric Raymer	Susan Shafiq	Jeremy Sutton	Tina Yarovsky
Dr. Eva E. Redei	Shelly Shannon	Mollie Taicel	Jerry and Jody Zamirowski
Beth Reese	Liz and Jeff Sharp	Alvin and Karen Telser	

Memorial and Honorary Gifts

In Honor of the 10 year staff anniversaries of Jenny Bienemann, Phil Smith and Heidi Stillman
Joe and Shannon Brady
Lee and Sandy Golub
Lisa Napartstek Green and Howard Green
Melinda McMullen and Duncan Kime
Rachel E. Kraft
Rocque and Anne Lipford
John McGowan and Dave Robins
Jill and Jonathan Meier
Darren and Anne Snyder
Nancy and Michael Timmers
Andy White and Shari Joffe White

In Honor of Leigh Bienen
Patrick G. and Shirley W. Ryan Foundation

Honoring Jason B. & Kathleen P.'s joy of this theatre
Barbara Burkett

In Honor of the Marriage of Doug Brown and Rachel Kraft
Kathi Brown
Michael and Betsy Katz with Henry and Sheila Hollander
Judith and Jerry Kaufman
Leslie and Robert Shook
Susan J. White
The Lookingglass Staff

In Memory of Andrew H. Chun
Drew Aveling
Nate Barlow
Edward Chun and Jane Lee
Elaine Chun and Brett Sherman
Peter Chun
Ann Cooper and Larry Heinzerling
Leslie and Christine Hart
Anthony and Kathleen Janik
Claire Miller
The Parks
Jennifer and Travis Seal

In Honor of Jonathan Green
Miriam and Barry Green

In Honor of Sara Gmitter
For the Curtain Up! Study Group

In Honor of Illinois
Susan Wolz

In Honor of Drs. Elena and Perry Kamel
Connie Calbeck
Michael Schwartz

In Memory of Valerie Lamb Smith
Langhorne Smith

In Honor of Phil Smith and Louise Lamson
Adam and Caroline Ith

Friends and Family of Marti Lyons
Barb Williams

In Honor of Andy White
Joan and Ron Fox

In Honor of Tom and Lori McCarthy
Jennifer and Robin Bienemann

In Memory of Michael Maggio
Genevieve and Carlo Maggio

In Honor of Dr. Marla Mendelson and Stephen Wolff
Lynn and Steven Gryll

In Memory of Eunice Joffe
Donna Baiocchi

In Honor of Charles Ellenbogen
Roseanne Druian

DONORS (CONTINUED)

In-Kind Donors

¡Ay Chiwawa!	Evian	Project Fixup
2econd Stage Theatre Company	Fadó Irish Pub	PUSH Sports Performance Training
A. Marek Fine Jewelry	The Field Museum	Que Syrah Winery
Action Booth	Francis Son	The Redhead Piano Bar
The Actors Gymnasium	Frontera Grill	Richard Ditton
Adam DeVarney	G Spot Hair Design	Rick and Deann Bayless
Alliance Française de Chicago	Gene & Georgetti	The Ritz-Carlton Chicago
American Girl Place Chicago	Gene Siskel Film Center	RL Restaurants
American Sightline Tours & Greyline Tours & Trolleys	Gino's East	Rocket Ranch Productions
Andaz 5th Avenue	Godiva Chocolatier	Rocque and Anne Lipford
Arden Theatre Company	Goodman Theatre	Roger Beck Portraits
Arena Stage	The Grill on the Alley	Rosebud Restaurants
Argo Tea	HERSHEY'S Chicago	RPM Italian
Asta Razma	HMS Media	Ruth Chris Steak House
Auditorium Theatre of Roosevelt University	Hyatt Chicago Magnificent Mile	Scott Levy, Attorney at Law
Benjamin Barnes	Hyatt Regency Chicago	Shaw's Crab House
Berghoff Catering & Restaurant Group	Irazú	Sirron Pilates Studio
Big Onion Tavern Group	Jam Theatricals	Sofitel Luxury Hotels
Blackfinn Ameripub	The James Hotel	Southern Wine & Spirits
BMO Harris Bank	Jane Skin Care Studio	SPLASH
Boka Restaurant Group	John G. Shedd Aquarium	Sunda
Broadway in Chicago	Karen Millen	Sweet Imposition
Bucketfeet	Kathy and Kevin Fanning	Taco Joint
Bud and Susan Zupp	Katz & Stefani	Talbott Hotel
Burrito Beach	Kelsey Grape Jewelry Design	Tanta
The Capital Grille	Kimberly Kuehl	Texas de Brazil
Carol Fox Associates	The Langham Chicago	TimeLine Theatre Company
Celia Leventhal & Edward Bergmark	Lee and Sandy Golub	TRU
Chicago Architecture Foundation	Lettuce Entertain You Enterprises	UBER
Chicago Chocolate Tours	Live Nation Global Touring	UNICUS Fitness
Chicago Commercial Collective	The Local Chicago	United Airlines
Chicago Costume	Lou Malnati's Pizzeria	Vera Bradley
Chicago Essex Inn	Lulu's on the Avenue	Vita Coco Water
Chicago History Museum	Major League Soccer & United Soccer Marketing	Wendella Sightseeing Company
Chicago Kernel	Mary Zimmerman	Windy City Rollers
Chicago Shakespeare Theater	Mercadito Hospitality	Wolfgang Puck Catering
Chicago Trolley and Double Decker Co.	Mesirow Financial	WXRT Radio
Chicago Youth Symphony Orchestras	Michael and Joanne Balogh	Zach Spangler
Chicago's Essex Inn	Mike's Hard Lemonade	Zed451
Claire Ashley	Millennium Knickerbocker Hotel	
Coca-Cola	Misha Nicholas	
Coco Pazzo Caffé	Miu Miu	
The Colbert Report	Moller Financial Services	
COLDCKOCK Whiskey	Museum of Broadcast Communications	
Color Image	Museum of Contemporary Art Chicago	
ComEd	Museum of Science & Industry	
Crown Imports	Nancy and Michael Timmers	
Dana Hotel and Spa	National Constitution Center	
Darren and Anne Snyder	New Holland Brewery	
Delle Amiche Salon	NoMI	
Destination Fit	Omni Chicago Hotel	
DJ Brock Manke	Park Hyatt Washington	
DJ D2A	Park Hyatt Chicago	
DJ Lani Love	Park Hyatt New York	
E Rock Nation	Paul & De Gray	
Eli's Cheesecake	Pelago Ristorante	
Emporio Armani	Phil Stefani Signature Restaurants	
Ensemble Español	Potter's Lounge	
Erin Gallagher Jewelry	PRADA	

*We gratefully acknowledge our deceased donors.

SERVICES, AMENITIES & COURTESY

ADMINISTRATIVE OFFICE

875 N. Michigan Ave., Suite 1430
Chicago, IL 60611
(773) 477-9257

THEATRE AND BOX OFFICE

821 N. Michigan Ave.
(Theatre entrance on Pearson Ave.)
Chicago, IL 60611
(312) 337-0665

BOX OFFICE HOURS

Tuesday through Saturday noon until curtain
Sunday noon until curtain (only during runs of shows)
Closed Monday
Order by phone: (312) 337-0665
Order online: www.lookingglasstheatre.org

SEASON SUBSCRIPTIONS

Subscribers receive priority seating, advance ticket sales, unlimited free ticket exchanges, great offers at partner restaurants, invitations to exclusive events, discounts on tickets, education classes and camps, and discounted parking. Call (312) 337-0665 or visit www.lookingglasstheatre.org/subscribe to subscribe online.

GROUP SALES

Groups of 10 or more save up to 20% based on group size and performance date. For more information, call (312) 337-0665 or e-mail groupsales@lookingglasstheatre.org.

GIFT CERTIFICATES

Lookingglass gift certificates are perfect for all occasions. Available in any denomination, gift certificates can be exchanged for tickets to any Lookingglass production. Gift subscriptions offer the recipient guaranteed seats and the numerous perks and discounts available only to subscribers. To order, call the box office at (312) 337-0665 or stop by the next time you attend a show.

ACCESSIBILITY

Lookingglass Theatre is accessible to wheelchairs, those who cannot walk stairs, and patrons with visual

and hearing impairments. Please notify the box office in advance of your visit so that we can best accommodate your needs. Box office: (312) 337-0665.

Lookingglass is pleased to offer one open captioning and one audio described performances for each production of the 2014-2015 season. In addition, touch tours will be offered prior to audio described performances.

AD))) OC

LOST AND FOUND

Lost and found information may be exchanged at the box office; please call (312) 337-0665.

CAMERAS AND RECORDING DEVICES

The use of cameras—with or without a flash—recorders, or other electronic devices is strictly prohibited.

PAGERS, PHONES AND WATCH ALARMS

Patrons are asked to silence pagers, cellular phones and watch alarms before entering the theatre.

LATECOMERS

Latecomers are seated at the discretion of management and may have to wait until a suitable break in the action of the play to be seated.

Smoking is prohibited.

Lookingglass Theatre is not responsible for personal property.

Lookingglass Coat Check is available for \$1 per item; all proceeds benefit Season of Concern. We cannot accept fur coats.

Thanks to The Saints: Volunteers for the Performing Arts for providing ushers. For information, visit www.saintschicago.org or call (773) 529-5510.

Thanks to Carolyn Dunn, Lookingglass' Saints volunteer usher coordinator.

ENTER TO WIN tickets to a Lookingglass production by filling out our audience survey. Surveys can be completed online at www.lookingglasstheatre.org/survey.