



MOBY DICK



FOOTLIGHTS.COM

lookingglass

LOOKINGGLASS THEATRE COMPANY

presents

MOBY DICK

Adapted and Directed by David Catlin^{+SDC}
In Association with The Actors Gymnasium
From the Book by Herman Melville

Scenic Designer
Courtney O'Neill^{USA}

Costume Designer
Sully Ratke^{USA}

Sound Designer and Composer
Rick Sims^{USA}

Lighting Designer
William C. Kirkham^{USA}

Rigging Designer
Isaac Schoepp

Properties Designer
Amanda Herrmann

Circus Choreographer
Sylvia Hernandez-DiStasi^{*}

Stage Manager
Jeri Frederickson^{*}

Production Manager
Sarah Burnham

Technical Director
Eleanor Richards

CAST

Kelly Abell* Fate #1, Innkeeper
Jamie Abelson* Ishmael*
Walter Owen Briggs⁺⁺ Ishmael[>]
Kareem Bandealy⁺⁺ Starbuck, Bungler
Cordelia Dewdney* Fate #3,
Mary Starbuck, Crone
Micah Figueroa* Cabaco,
Captain of New Bedford Whaleship
Anthony Fleming III⁺⁺ Queequeg

Raymond Fox⁺⁺ Stubbs,
Captain Boomer, Captain Gardiner
Mattie Hawkinson* Fate #2, Sea Fate,
Cetologist
Nathan Hosner* Ahab
Javen Ulambayar Mungun
Understudies Thomas J. Cox⁺⁺,
Lindsey Noel Whiting⁺⁺, Matthew C. Yee*,
Sammy Zeisel

* evening performances > matinee performances

Artistic Director
Heidi Stillman^{*}

Executive Director
Rachel E. Kraft

Producing Director
Philip R. Smith^{*}

**Connectivity and
Engagement Director**
Andrew White^{*}

General Manager
Michele V. Anderson

PRODUCTION SPONSOR



**National
Endowment
for the Arts**
arts.gov

OPENING NIGHT SPONSORS

PARK HYATT CHICAGO®



* Member of Actors' Equity Association, the union for professional actors and stage managers

+ Lookingglass Theatre Company Ensemble Member or Artistic Associate

SDC Denotes a member of the Stage Directors and Choreographers Society, a national theatrical labor union.

USA Denotes member of United Scenic Artists, the union for Designers, Artists and Craftspeople

Lookingglass Theatre Company is a member of Theatre Communications Group (TCG), the national service organization for American Theatre, and of the League of Chicago Theatres, the local service organization for theatre.

PRODUCTION STAFF

Dialect Coach

Kathy Logelin

Interim Assistant

Technical Director

Sam Moryoussef

Assistant Director

Jeffrey Mosser

Danisa Rosengren

Assistant Stage Manager

Katherine Adams*

Assistant Lighting Designer

Claire Chrzan

Assistant Costume Designer

Robert Kuhn

Assistant Properties Designer

Christopher J. Neville

Assistant Rigging Designer

JJ Marquis

Assistant Sound Designer

Morgan Lake

Master Carpenter

Jacob Puralewski

Isaac Schoepp

Carpenters

Nic Belanger

Elyse Estes

Victoria Fox

Nick Harazin

Austin Kopsa

Kevin Lynch

Colin Martinez

Ian Olsen

Adena Rice

Vanessa Thomas

Scenic Charge

Sarah Lynn Lewis

Scenic Charge Assistant

Lee Moore

Scenic Artists

Emily Smith

Assistant Master Electrician

John Kelly

Electricians

Bryan Black

Raphael Grimes

Jack Horwitch

Neal Javenkoski

Andy Kauff

Shawn Kronk

Steve Labedz

Bill McGhee

Bill Murphy

Cameron Petti

Martha Templeton

David Trudeau

Jonah White

Costume Shop Manager

Stephanie Cluggish

Costume Shop Assistant

Madeleine Low

Draper

Beth Uber

Stitchers

Elise Petrucci

Makeup/Wigs

Samantha Umstead

for Penny Lane Studios

Costume Crafts

Melissa Bochat

Properties Artisans

Lydia Hanchett

Shannon Golden

Brontë DeShong

Deck Crew

Shannon Golden

Austin Kopsa

Jake Wiener

Wardrobe Supervisor

Amber Collins

Wardrobe Crew

Mel Motz

Rachel Rathe

Stage Management Intern

Jamieson Werling

Scene Shop Interns

Amanda Pusateri

Daniel Shute

Electrics Intern

Jessie Cole

Sound Intern

Adriana Rodriguez

Wardrobe Intern

Meghan Graves

Casting

Philip R. Smith*

Raymond Fox*

* Member of Actors' Equity Association,
the union for professional actors and
stage managers

+ Lookingglass Theatre Company
Ensemble Member or Artistic Associate

Shirley Ryan
Abilitylab

Shirley Ryan AbilityLab's Performing Arts Medicine Program
is the exclusive provider of Physical Medicine and Rehabilitation
for Lookingglass Theatre Company



PARK HYATT CHICAGO AND NoMI KITCHEN CELEBRATE LOOKINGGLASS THEATER

THANK YOU FOR YOUR LOYAL PARTNERSHIP

PARK HYATT CHICAGO®

NoMI

KITCHEN
LOUNGE
GARDEN
SPA

TELEPHONE +1 312 335 1234 | PARKHYATTCHICAGO.COM | NOMIKITCHEN.COM

HYATT name, design and related marks are trademarks of Hyatt International Corporation
© 2017 Hyatt International Corporation. All rights reserved.

REFLECT

lookingglasstheatre.org/REFLECT

REFLECT is a curated series of post-show discussions featuring panelists with a range of viewpoints and expertise on the content and context of the play.

Discussions take place directly following the **2PM** matinee on select **SUNDAYS** at Lookingglass Theatre. The discussions are free and open to the public.

JULY 9

Escape, Exploration and Encounter:

Is *Moby Dick* THE American novel?

Melville biographer **Michael Shelden**, author of *Melville in Love: The Secret Life of Herman Melville* and the *Muse of Moby Dick*, discusses what the epic novel reveals about the American character. Shelden's biography of George Orwell was a Pulitzer Prize Finalist.

JULY 23

Adventures in Adaptation:

Staging the Impossible

How does one tame an enormous whale of a novel? How much is done on the page, how much is done on the stage? A conversation with *Moby Dick*'s adaptor and director **David Catlin** and other guests.

AUGUST 13

Extremity and Endurance:

Survival on the Open Sea

The crew of the *Pequod* is in for a long, rough ride even before they encounter a certain white whale. What were the hard and harsh realities of sun, sea, salt water, and the hunt for whale oil?

AUGUST 27

Mermaids, Myths, and Maritime Monsters: What Lies Beneath the Surface?

What creatures lurked in the murky ocean depths, haunting the dreams and nightmares of unknowing sailors? Northwestern University's **Tracy Davis** and the Raven Foundation's **Andrew McKenna** discuss.

ACCESS

Lookingglass is pleased to offer an open captioned performance and an audio described performance for each production in our 2016–17 season.
lookingglasstheatre.org/ACCESS

OPEN CAPTIONING

<i>Moby Dick</i>	July 6, 2017	7:30PM
------------------	--------------	--------

AUDIO DESCRIPTION/TOUCH TOUR

<i>Moby Dick</i>	July 13, 2017	7:30PM
	Touch Tour	6PM

For more information, email access@lookingglasstheatre.org
or call **773.477.9257 X 125**

The Journey of the White Whale



The Return Home:
CHICAGO, IL

**MOBY DICK RETURNS TO
THE LOOKINGGLASS STAGE
IN 2017**



Third Port of Call:
COSTA MESA, CA

**AT SOUTH COAST REP, A
STUNNING, GRAVITY-DEFYING
MOBY DICK —LA Times**

"We wanted projects artists
are passionate about.
It's an acrobatic and poetic...
telling of a classic story."

—Marc Masterson,
South Coast Repertory Artistic Director



**South Coast Repertory
Jan. 20 – Feb. 19, 2017**



"Visually stunning"

—OC Weekly



"Call me Ishmael." And with these words, a great journey begins...

Lookingglass Theatre Company
June 7–Sept. 3, 2017



June 10–Aug. 28, 2015



Arena Stage
Nov. 19–
Dec. 24, 2016

Alliance Theatre
Oct. 19–30, 2016

"Giant, breathtaking, artistic
...I applaud the audacity
of this company."

—Atlanta In Town



The *Pequod* Embarks:
CHICAGO, IL

Moby Dick begins its world
premiere run at Lookingglass.
The production's record-breaking
success launches a tour of
the leviathan hit across the US.



First Port of Call:
ATLANTA, GA

MOBY DICK GOES AERIAL
AT THE ALLIANCE

—Marietta Daily Journal

"We're always looking for stories
to tell that are so big and so wildly
unusual that anyone can walk
through that story's front door."

—Susan Booth,
Alliance Theatre Artistic Director



Second Port of Call:
WASHINGTON, DC

A HAUNTINGLY BEAUTIFUL
MOBY DICK SURFACES AT
ARENA STAGE

—Fredricksburg Review

"*Moby Dick* begs to be reimagined,
and who better than David Catlin
and the creative team from Lookingglass."

—Molly Smith, Arena Stage Artistic Director

PROFILES



KELLEY ABELL (Fate #1, Innkeeper) returns to Lookingglass after previous appearances in *Peter Pan (A Play)* and the touring production of *Moby Dick*. Other credits include: *Moby Dick* (Arena Stage, South Coast Repertory, and Alliance Theatre); *42nd Street* and *Fiddler on the Roof* (Paramount Theatre); *Mr. Burns: A Post Electric Play* (Theater Wit); *Dorian* (The House Theatre of Chicago); *Bat Boy: The Musical* and *Titanic* (Griffin Theatre). She is a graduate of Northwestern University and will be attending graduate school at Washington University in St. Louis in the fall. Gratitude to David, Graham, and the family.



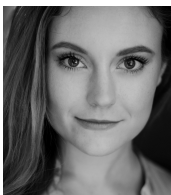
JAMIE ABELSON (Ishmael at evening performances) previously appeared at Lookingglass in the initial run of *Moby Dick*, as well as *Peter Pan (A Play)* and *Treasure Island* (Understudy). Other recent projects include *Red Kite Treasure Adventure* and *Red Kite Blue Sky* (Chicago Children's Theatre); *The Lieutenant of Inishmore* (Northlight Theatre); *Eurydice* (Victory Gardens Theater); *Scenes from the Big Picture* (Irish Theatre of Chicago); *As Told by the Vivian Girls* (Dog and Pony Theatre Co.); *columbinus* (Raven Theatre); and *Hope Springs Infernal* and *Dorian* (The House Theatre of Chicago). Regional credits include *Moby Dick* (Alliance Theatre, Arena Stage, South Coast Repertory). Jamie holds a BFA in Drama from the Tisch School of the Arts at NYU.



KAREEM BANDEALY (Starbuck, Bunker/Lookingglass Ensemble Member) is an Ensemble Member at Lookingglass and has previously appeared in *Blood Wedding* and *Moby Dick*, *The Little Prince*, *Big Lake Big City*, *Bengal Tiger at the Baghdad Zoo*, *The Last Act of Lilka Kadison*, and *Peter Pan (A Play)*. Chicago credits: *A Christmas Carol* (2014–2016), *Rock 'N' Roll*, *Gas For Less* and *King Lear* at Goodman Theatre; *The Wheel* at Steppenwolf Theatre Company; *Oklahoma!* at Paramount Theatre; *The Good Book* and *The Illusion* at Court Theatre; *Julius Caesar*, *Hamlet*, *The Caretaker* and *Heartbreak House* at Writers Theatre; *A Midsummer Night's Dream*, *Edward II* and *Romeo and Juliet* at Chicago Shakespeare Theater; *A Disappearing Number*, *Blood and Gifts* at TimeLine Theatre; *Othello* (as Othello) at The Gift Theatre, and many others. Regional credits include *The Merry Wives of Windsor*, *The Three Musketeers* and *The Tempest* at Illinois Shakespeare Festival; *Love's Labours Lost* at Notre Dame Summer Shakespeare; *Julius Caesar* and *Stuff Happens* at Pittsburgh Irish & Classical Theatre, and four seasons with Orlando Shakespeare Theater. He has appeared in several films including *The Merry Gentleman* directed by Michael Keaton, on TV in *Chicago Fire*, and is a recipient of the 2011 3Arts Artist Award.



WALTER OWEN BRIGGS (Ishmael at matinee performances/ Lookingglass Artistic Associate) is happy to return to Lookingglass after performing as Starbuck in the touring production of *Moby Dick* at South Coast Repertory, Arena Stage and Alliance Theatre. He has previously appeared at Lookingglass in *Bengal Tiger at the Baghdad Zoo* and *The North China Lover*. Chicago credits include: *Sucker Punch* (Victory Gardens Theater), *Hit The Wall* (The Inconvenience/Steppenwolf Theatre Company), *All Our Tragic* (The Hypocrites), and *The Glass Menagerie* (Mary-Arrchie Theatre Co.). Regionally, Walter has performed at A.R.T., Actors Theatre of Louisville, and The Getty Villa. TV/Film credits include; *Chicago Med*, *Jessica, A Good Person*, *Ballad*, and *Older Children*. Walter is a graduate of the Chicago College of Performing Arts at Roosevelt University.



CORDELIA DEWDNEY (Fate #3, Mary Starbuck, Crone) returns to Lookingglass with *Moby Dick* after the national tour this past year to Alliance Theatre, Arena Stage, and South Coast Repertory Theatre. Last summer she appeared on *Chicago Med*. Cordelia is a graduate of Northwestern University with degrees in Theatre and English and is a proud alum of the British American Drama Academy.



MICAH FIGUEROA (Cabaco, Captain of New Bedford Whaleship) returns to Lookingglass after appearing in the original production of *Moby Dick* in 2015, the *Moby Dick* national tour, and in *Lookingglass Alice*. Chicago credits include: *Tall Girl and the Lightning Parade* (Walkabout Theater); *The Winter Pageant* (Redmoon Theater); and *Distance to the Moon* (First Floor Theater). Regional credits include: *Moby Dick* (Alliance Theatre, Arena Stage, South Coast Repertory); *In the Beginning*, *Henry IV* (Dallas Theater Center); *The Farnsworth Invention*, *Wild Oats* (Theatre Three); *Coriolanus*, *Cyrano de Bergerac*, *Macbeth* (Shakespeare Dallas); *Titus Andronicus* (Kitchen Dog Theater); and *Sense and Sensibility* (Stolen Shakespeare Guild). He earned a BFA from Southern Methodist University and the British American Drama Academy.



ANTHONY FLEMING III (Queequeg/Lookingglass Ensemble Member) was last seen at Lookingglass in *Moby Dick* in 2015 and *Lookingglass Alice* in 2014, which marked his tenth production of the show, where he completed 555 total performances. Other Lookingglass productions include: *Big Lake Big City*; *Mr. Rickey Calls a Meeting*; *Arabian Nights*; *1984*; *Icarus*; *Fedra*; and *Race*. Select regional credits: *Ma Rainey* with Milwaukee Repertory Theater and *Clybourne Park* with Arizona Theatre Company. Anthony is a Chicagoan who has been working since 1997 on Chicago stages, including Victory Gardens Theater, Steppenwolf Theatre Company, Goodman Theatre, Court Theatre, Chicago Theater Company, and Piven Theatre Workshop.

PROFILES



RAYMOND FOX (Stubbs, Captain Boomer, Captain Gardiner/ Lookingglass Ensemble Member) last appeared at Lookingglass in *Thaddeus and Slocum: A Vaudeville Adventure*. Off-Broadway/ Broadway: *Metamorphoses* (Second Stage Theatre, Circle in the Square Theatre). Regional Credits: Goodman Theatre, Seattle Repertory Theatre, Berkeley Repertory Theatre, Arena Stage, Arden Theatre, South Coast Repertory, Remy Bumppo Theatre Company, Route 66 Theatre, Hartford Stage, American Repertory Theatre, Indiana Repertory Theatre, Alliance Theatre, Meadow Brook Theatre, The House Theatre of Chicago, Mark Taper Forum, Court Theatre, McCarter Theatre, Kansas City Repertory Theatre, First Folio Theatre, Canada's Stratford Festival and TimeLine Theatre (*Blood and Gifts*, 2013 Equity Jeff Award for Supporting Actor). Education: Northwestern University and the A.R.T. Institute at Harvard University.



MATTIE HAWKINSON (Fate #2, Sea Fate, Cetologist) returns to Lookingglass after previously appearing in *Hillbilly Antigone*. Recently, Mattie appeared in Quintessence Theatre Group's productions of *Love's Labour's Lost*, *The Broken Heart*, and *Wilde Tales*. Last fall she was in *The City of Conversation* at Northlight Theatre. Other credits include: work at Pennsylvania Shakespeare Festival, Baltimore's Center Stage, Theater at Monmouth, Cincinnati Playhouse in the Park, Cleveland Play House, Milwaukee Repertory Theater, Denver Center for the Performing Arts, Manhattan Theatre Club, Ensemble Theatre Company, Goodman Theatre, Steppenwolf Theatre Company, Chicago Shakespeare Theater, Apple Tree Theatre, Roadworks Productions, First Folio Theatre, Indiana Repertory Theatre, Victory Gardens Theater, and five seasons at the Eugene O'Neill National Playwrights Conference. Thanks to Lookingglass, Josh, Mom, and Denise. mattiehawkinson.weebly.com



NATHAN HOSNER (Captain Ahab) makes his Lookingglass debut. He recently played Lord Aster in the first national tour of *Peter and the Starcatcher*. Chicago credits include productions with Writers Theatre, Chicago Shakespeare Theater, Court Theatre, Goodman Theatre, Paramount Theatre, Northlight Theatre About Face Theatre, and First Folio Theatre. Regional credits include productions with American Players Theatre, Alabama Shakespeare Festival, Indiana Repertory Theatre, New Theatre, Illinois Shakespeare Festival, Arkansas Shakespeare Theatre, Door Shakespeare, and The BoarsHead Theater. Nathan is a graduate of The Royal Academy of Dramatic Art.



JAVEN ULAMBAYAR (Mungun) is delighted to return to the stage with the production of *Moby Dick*, after performing in the original production and national tour. Javen is a Chicago-based circus performer, specializing in aerial straps. He attended circus school “Juventas” in St. Paul, MN where he attained his performing skills. Beyond aerial straps, Javen is trained in double trapeze, Chinese pole, and Russian bar. After graduating from the University of Minnesota with a degree in Kinesiology, he continued his career with companies such as Midnight Circus and The Actors Gymnasium. Most recently, Javen was one of five artists chosen to create new circus works for the Circus Now Residency Program hosted at Lake Placid Center for the Arts.

DAVID CATLIN (Adapter/Director/Lookingglass Ensemble Member)’s Lookingglass directing credits include: *Lookingglass Alice* and *The Little Prince*. Other regional directing credits include: McCarter Theatre (Princeton, NJ), Arden Theatre Company (Philadelphia), New Victory Theater (NYC), Syracuse Stage, Actors Theatre of Louisville, Alliance Theatre (Atlanta) and The Getty Villa (LA). Other recent directing credits include: *The Phantom Tollbooth* (DePaul University) and *Moby Dick* (Northwestern University). David teaches acting with Northwestern University’s theatre department.

WILLIAM C. KIRKHAM (Lighting Designer) is thrilled to be setting sail with *Moby Dick* again. Previous Lookingglass credit: *The Little Prince* (2014 Jeff Award recipient). Regional Credits include: Alliance Theatre, Arena Stage, AZ Broadway Theatre, Arts-West, Chicago Children’s Theatre, Chicago Shakespeare Theater, Childsplay, Cincinnati Playhouse in the Park, Contemporary American Theater Festival, The House Theatre of Chicago, The Hypocrites, Phoenix Theatre, Portland Center Stage, Sideshow Theatre Company, South Coast Repertory, Steppenwolf Theatre Company, and the Utah Shakespeare Festival. William attended Northern Arizona University, Northwestern University, and is a proud member of USA Local 829. wckirkham.com

COURTNEY O’NEILL (Scenic Designer) is thrilled to return to the Lookingglass port with *Moby Dick* after voyaging to Alliance Theatre, Arena Stage and South Coast Repertory. Chicago credits include: *The Little Prince* (Lookingglass), Writers Theatre, Steppenwolf Theatre Company, Windy City Playhouse, Court Theatre, The Hypocrites, The Gift Theatre, and Northlight Theatre. Regional: Baltimore’s Center Stage, Milwaukee Repertory Theater, Marin Theatre Company, Round House Theatre, Virginia Stage Company, and Kansas City Repertory Theatre. Courtney is the recipient of the 2017 Michael Maggio Emerging Designer Award. She won a Jeff Award for *Mud* (The Hypocrites). She holds an MFA from Northwestern, a BFA from DePaul University, and currently teaches at both institutions. courtneyoneill.com

PROFILES

SULLY RATKE (Costume Designer) is thrilled to be back at Lookingglass. She is fascinated by all peoples (and their wide world!) and harbors an intuition for connecting them—particularly through their common use of symbols, rituals, and spiritual ideas. Find more of her art at sullyratke.com and enjoy the show!

RICK SIMS (Sound Designer/Composer/Lookingglass Artistic Associate) Rick has composed and designed sound for more than 20 Lookingglass productions. Other Chicago credits include: Steppenwolf Theatre Company, Congo Square Theatre Company, Writers Theatre, Lifeline Theatre, Griffin Theatre, Chicago Children's Theatre, The Hypocrites, The House Theatre of Chicago, Court Theatre, American Theater Company, Victory Gardens Theater, Raven Theatre, Steep Theatre, Northlight Theatre and About Face Theatre. Regional credits include: the Getty in LA; South Coast Repertory in Costa Mesa, CA; Arena Stage in Washington, D.C.; Alliance Theatre in Atlanta; Boston Playwrights' Theatre; Arden Theatre Company in Philadelphia; Playwrights Horizons in NYC; Actors Theatre of Louisville and Portland Playhouse in Portland, OR. Rick won a Jeff Award for Sound Design for Lookingglass' *Moby Dick* and *Hephaestus*, as well as a Black Theatre Alliance Award for Congo Square Theatre Company's *Brothers In the Dust*, and received several nominations for both awards. Rick is an Artistic Associate of Lookingglass, an Artistic Affiliate with American Blues Theater and an Associate Designer with Aria Music Designs (Ray Nardelli and Josh Horvath). Rick also wrote the book, music and lyrics for Lookingglass' *Hillbilly Antigone*.

ISAAC SCHOEPP (Rigging Designer)'s rigging design credits include: *Moby Dick* (Lookingglass, Jeff Award; Alliance Theatre; Arena Stage; South Coast Repertory), *Quest*, *Marnie and Phil: A Circus Love Letter*, *Circuscope*, and *Magical Exploding Boy* (The Actors Gymnasium), and *The Year I Didn't Go to School* (Chicago Children's Theatre). Isaac is a proud Associate Artist with The Actors Gymnasium and serves as their staff rigging specialist. He has also appeared onstage with Lookingglass, The Actors Gymnasium, and The Back Room Shakespeare Project, among others. Each fall he coordinates the Christ College Freshman Drama Workshop at Valparaiso University. Much love to Claire.

AMANDA HERRMANN (Properties Designer) is pleased to be working on *Moby Dick* again. Other Lookingglass credits include: *Beyond Caring*, *Mr. and Mrs. Pennyworth*, and *Life Sucks*. Other credits include: *W;t* (The Hypocrites); *The Hollow*, *The Tin Woman* (Peninsula Players Theatre); *Pirandello's Henry IV*, *Fallen Angels* (Remy Bumppo Theatre Company); *Miss Bennet* (Northlight Theatre); *Naperville* (Theater Wit); *Balm in Gilead* (Griffin Theatre); *The Sweeter Option* (Strawdog Theatre Company); *The Apple Family Plays* (TimeLine Theatre); and *Velveteen Rabbit* (Lifeline Theatre). Amanda is a graduate of Ripon College with a B.A. in Theater and Art.

SYLVIA HERNANDEZ-DISTASI (Circus Choreography/Lookingglass Artistic Associate)

is a co-founder and the Artistic Director of The Actors Gymnasium, where she serves as master teacher, choreographer and director of The Professional Circus Training Program. Sylvia has been an Artistic Associate of Lookingglass since 1999. She has worked on more than 15 productions with the company, where she has received three (of her four) Jeff Awards for choreography (*Baron in the Trees*, *Hard Times* and *Lookingglass Alice*). Other Lookingglass credits include: *Icarus*, *Little Prince*, *Moby Dick*, and *Thaddeus and Slocum: A Vaudeville Adventure*, among others. Chicago Credits: Steppenwolf Theatre Company, Goodman Theatre and Chicago Shakespeare Theater. She is a recipient of the 3Arts Award for Design (2014) and the Award of Honor for Outstanding Contributions by the Illinois Theater Association (2015).

KATHY LOGELIN (Dialect Coach) is thrilled to be working with Lookingglass again, having previously coached *Moby Dick* in 2015, and *Treasure Island*. Recent coaching credits include: the 2016–17 tour of *Moby Dick*; *Boeing, Boeing* (Indiana Repertory Theatre); *The Little Flower of East Orange* and *Jesus Hopped the A Train* (Eclipse Theatre Company); *The Mutilated* with A Red Orchid Theatre); *A Little World of Our Own* and *Spinning* (Irish Theatre Chicago); *The Woman in Black* (WildClaw Theatre); and *Persuasion* (Chamber Opera Chicago, 2015 Edinburgh Festival Fringe). Kathy holds a B.S. in Acting from Illinois State University.

JERI FREDERICKSON (Stage Manager) returns to Lookingglass where she has worked most recently as Stage Manager on *Mr. and Mrs. Pennyworth*. Other Lookingglass productions as stage management or crew: *Treasure Island*, *Lookingglass Alice*, *In the Garden: A Darwinian Love Story*, *The North China Lover* and *Big Lake Big City*. Stage management credits include musicals and new works at: TimeLine Theatre, Drury Lane Theatre, Chicago Children's Theatre, and Barrington Stage Company. She received a B.A. from Hope College and is an ensemble member at Irish Theatre of Chicago.

KATHERINE ADAMS (Assistant Stage Manager) is glad to be returning to Lookingglass for her first full mainstage production with the company; she stage managed Lookingglass' community outreach project *Handle with Care* in 2016 and was an intern with Lookingglass in the summer of 2009. Recent stage management credits include *Born Yesterday* (Remy Bumppo Theatre Company); *United Flight 232* (Jeff Awards for Ensemble and Play-Midsize), *The Magnificents* 2015 Miami tour, and *The Nutcracker* 2015, 2014, and 2012 Miami tour (The House Theatre of Chicago); summers 2016 and 2015 with the Michigan Shakespeare Festival; and productions with Court Theatre, Theater Wit, Lifeline Theatre, and A Red Orchid Theatre. Katie is an alumna of Northwestern University.

PROFILES

THE ACTORS GYMNASIUM At The Actors Gymnasium people Learn To Fly—physically, emotionally, and creatively. One of the nation's premiere circus and performing arts training centers, Actors Gymnasium was founded in 1995 by a lifelong circus performer from Ringling Brothers, a co-founder of Tony Award-winning Lookingglass Theatre Company, an arts journalist, and a producer, in order to bring new physicality to the American Theatre. Three primary programs expand creativity, community, and courage: teaching circus arts, physical theatre and multi-disciplinary performance; producing original and daring circus-theatre, often in collaboration; and providing innovative event entertainment. Actors Gymnasium is a co-founder of Enrich Evanston: An Arts Equity Task Force. In addition to the longstanding partnership with Lookingglass, collaborators include Goodman Theatre, Chicago Children's Theatre, Lucky Plush Productions, and many more. Camps, weekly classes, curriculum for five universities, master classes, summer intensive, and a 9-month professional training program develop artists of all ages and abilities. actorsgymnasium.org

PHILIP R. SMITH (Producing Director/Lookingglass Ensemble Member) most recently appeared as Dr. Aster in *Life Sucks*, Captain Smollett in *Treasure Island* at Lookingglass and Berkeley Repertory Theatre, and as Wrede Sartorius in *The March* at Steppenwolf Theatre Company. Other Lookingglass credits include Bass in *Big Lake Big City*, Ethan in *Ethan Frome*, Will in *Trust*, Phileas Fogg in *Around the World in 80 Days*, Ivan in *The Brothers Karamazov*, Tinker Bosch in *The Wooden Breeks*, and Creon in *Hillbilly Antigone*. Other recent credits include: Atticus Finch in *To Kill a Mockingbird* and Rev. Parris in *The Crucible*, both at Steppenwolf Theatre Company, and Fogg in *Around the World in 80 Days* at Baltimore's Center Stage. Other regional credits include: McCarter Theatre, Seattle Repertory Theatre, Arden Theatre Company, Brooklyn Academy of Music (NYC), and The Actors' Gang (LA). TV and film credits include: *Boss*, *Friends*, *Prison Break*, *Chicago Hope*, *Early Edition*, *Kissing a Fool*, *Since You've Been Gone*, *High Fidelity*, *The Express*, and *The Dilemma*. As Producing Director, oversight includes Lookingglass casting and serving as a primary artistic liaison to the development department, special events, marketing, and production departments.

ANDREW WHITE (Connectivity and Engagement Director/Lookingglass Ensemble Member) has participated as an actor, writer, or director in more than forty Lookingglass productions, most recently directing this season's opening production, *Life Sucks*. He wrote the book and lyrics for *Eastland: A New Musical*, received a Jeff Award for his 2004 adaptation of George Orwell's *1984* (which was presented at Steppenwolf Theatre Company last season as part of the Steppenwolf for Young Adults program), and wrote and directed *Of One Blood*, about the murder of three civil rights workers in 1964. He has taught in various Lookingglass outreach programs and residencies, and co-founded Mosaic Experience, a company which uses an arts-based approach to dialogue about diversity. His family in Evanston includes one wife, Shari; two children, Julia and Asher; and one cat named Jane.

MICHELE V. ANDERSON (General Manager) is in her eleventh season with Lookingglass Theatre Company, and in her eighth year as General Manager after having been the Director of Finance and Administration. Her over 20 years of experience in arts management include nearly ten years as Director of Finance & Administration at Steppenwolf Theatre Company, Business Manager of the International Theatre Festival of Chicago and numerous short-term consulting and freelance positions with Writers Theatre, About Face Theatre, Victory Gardens Theater, Chicago Gateway Green, Storycatchers Theatre and others. After receiving both a B.A. and a B.S. from Indiana University, Michele started her career in Chicago working for the for-profit producers Cullen Henaghan and Platt. Michele also has an M.A. in Arts Administration from Columbia College Chicago. She lives in Chicago with her husband Ken.

HEIDI STILLMAN (Artistic Director/Lookingglass Ensemble Member) has both written and directed productions for Lookingglass, including: *Cascabel* (in collaboration with Tony Hernandez and Rick Bayless,) *The North China Lover*, *Hephaestus* (in collaboration with Tony Hernandez), *The Brothers Karamazov* (2009 Raven Award), *Hard Times* (five Jeff Awards including Director, New Work, and Production; also produced at Arden Theatre Company in Philadelphia), and *The Master and Margarita* (Jeff Nominated). Additional writing credits with Lookingglass include: *The Last Act of Lilka Kadison* with Nicola Behrman, David Kersnar, Abbie Phillips and Andy White, *The Old Curiosity Shop* with Laura Eason and Raymond Fox (Jeff Award for Adaptation), and *The Baron in the Trees* with Larry DiStasi (Jeff Nominated). Directing work with Lookingglass includes: *Death Tax*, *Bengal Tiger at the Baghdad Zoo*, *Trust*, *The Wooden Breeks*, and *Hillbilly Antigone*. Heidi's adaptation of *The Book Thief* premiered at Steppenwolf Theatre Company in 2012. She directed Minita Gandhi's *Muthaland* for Silk Road Rising Solos and Victory Gardens' Ignition Festival in 2015, CAATA/ConFEST in 2016, and at 16th Street Theatre in 2017. Additionally, Heidi has staged Mary Zimmerman's *The Arabian Nights* at Berkeley Repertory Theatre. Most recently, she co-adapted and directed *The Year I Didn't Go to School* at the Chicago Children's Theatre. She looks forward to revisiting *Hard Times* in the 30th Anniversary Season. She lives in Chicago with her husband and her 13 year-olds, Sadie and Jude.

RACHEL E. KRAFT (Executive Director) is in her twelfth season as the Executive Director of Lookingglass Theatre Company, the recipient of the 2011 Regional Theatre Tony Award. Her thirty years of experience in arts management include over a decade as director of development at Goodman Theatre, in addition to key roles with the Arts and Business Council, Northlight Theatre, and the Chicago Dance Coalition. Rachel currently serves on the Executive Committee and Foundation Board of the League of Chicago Theatres, the local service organization for Chicago theater, after having served on its Board of Directors (including a term as Vice Chairman). She also served on the Board of Directors (including a term as Vice President) of Theatre Communications Group, the national service organization for nonprofit professional theater in the United States. Rachel remains an advisor to the documentary film organization the Kindling Group, where she was a charter board member and served on the board for fifteen years, is a trustee of the Jewish Women's Foundation of Chicago, and serves on the Alumnae Council of the Chicago Foundation for Women after serving on the board and as Co-Chair of its Alumnae Council.

ABOUT LOOKINGGLASS

Inventive. Collaborative. Transformative. Lookingglass is home to a multi-disciplined collective of artists who create original, story-centered theatre through a physical and improvisational rehearsal process centered on ensemble. Lookingglass has staged 64 world premieres and garnered numerous awards in its mission to change, charge and empower audiences and artists alike. Lookingglass Education and Community Programs encourage creativity, teamwork, and confidence with thousands of students and community members each year. In 2003, Lookingglass Theatre opened in Chicago's landmark Water Tower Water Works. In 2011, Lookingglass received the American Theatre Wing's Tony Award® for Outstanding Regional Theatre. In 2016, Lookingglass received the MacArthur Award for Creative and Effective Institutions.

LOOKINGGLASS COMPANY MEMBERS

Ensemble

Kareem Bandealy
Mara Blumenfeld
J. Nicole Brooks
David Catlin
Thomas J. Cox
Lawrence E. DiStasi
Kevin Douglas
Christine Mary Dunford

Laura Eason
Anthony Fleming III
Raymond Fox
Joy Gregory
Doug Hara
David Kersnar
Louise Lamson
Daniel Ostling

David Schwimmer
Joey Slotnick
Philip R. Smith
Heidi Stillman
Tracy Walsh
Andrew White
Temple Williams III
Mary Zimmerman

Artistic Associates

Atra Asdou
Brian Sidney Bembridge
Chris Binder
Walter Owen Briggs
Deanna Dunagan
Christopher Donahue
Kasey Foster
Sara Gmitter

Sylvia Hernandez-DiStasi
Tony Hernandez
Lauren Hirte
Joshua Horvath
Eric Huffman
J. Salomé Martinez Jr.
Andre Pluess
Ericka Ratcliff

Scott Silberstein
Rick Sims
Alison Siple
Samuel Taylor
Lisa Tejero
Troy West
Lindsey Noel Whiting



ENSEMBLE UPDATE

MARA BLUMENFELD last designed *Beyond Caring* and *Mr. and Mrs. Pennyworth* at Lookingglass. Other recent projects include Mary Zimmerman's new production of *Rusalka* for the Metropolitan Opera, *Parade* for Writers Theatre, and the revival of Mary's adaptation of *The Odyssey* for the Oregon Shakespeare Festival.

J. NICOLE BROOKS was last seen on the Lookingglass stage as Tracy in *Beyond Caring*. She has several projects and commissions in development. @doctaslick

THOMAS J. COX was last seen at Lookingglass in a single performance as Ahab in *Moby Dick*; prior to that, he appeared in *Cascabel*. He spent last fall appearing in Court Theatre's *Man in the Ring* and as Orestes in *Electra*. He spent the winter and spring teaching drama to very small people.

LAWRENCE E. DISTASI was last seen onstage at Lookingglass as Frank in *Thaddeus and Slocum: A Vaudeville Adventure*. He is currently spending a lot of time dancing with excel spreadsheets.

CHRISTINE MARY DUNFORD most recently appeared in *Blood Wedding* at Lookingglass. She directed her own adaptation of *Still Alice* at Lookingglass in the spring of 2013. Christine continues to work on The Memory Ensemble and as director of the School of Theatre & Music at UIC.

KEVIN DOUGLAS' play *Thaddeus and Slocum: A Vaudeville Adventure* had its world premiere at Lookingglass in 2015. He has also co-written an independent film called *Call Center*. He and his wife have a web-series titled *Tam and Kevin Under 60*—Short Sketch comedy videos in under 60 seconds! They can all be seen on YouTube. His next play will be a comedy titled, *Plantation!* and it will have its world premiere at Lookingglass in early 2018!

LAURA EASON recently finished her fourth season as a writer/producer on the Emmy-award winning Netflix drama *House of Cards*. Her feature film debut begins shooting this summer, produced and starring Sarah Jessica Parker. Her play *Sex with Strangers* was one of the top ten most produced plays in the US in 2015/16 and 2016/17 seasons, and had its London premiere in January at Hampstead Theatre. lauraeason.com @LeasonNYC

JOY GREGORY is beginning her fourth season as a writer-producer on the CBS series *Madam Secretary*. Her episode "Waiting for Taleju" was nominated for a Humanitas Prize this year. She is still setting up a film adaptation of her play, *The Shaggs: Philosophy of the World* and hopes this will be the year. She staunchly believes democracy will survive all this.

DOUG HARA recently returned to Lookingglass to direct his own play, *Mr. and Mrs. Pennyworth*. He was recently seen in Philadelphia playing Peter Quince in Arden Theatre Company's production of *A Midsummer Night's Dream*.

ENSEMBLE UPDATE

DAVID KERSNAR is directing *20,000 Leagues Under the Seas* both next year for Lookingglass and currently at Monterey Peninsula College, where he serves as Theatre Arts Chair.

LOUISE LAMSON is looking forward to being back on the Lookingglass stage in the fall production of *Hard Times*. In the meantime, she is enjoying directing third graders at Peirce Elementary in their production of *The Lorax*.

DANIEL OSTLING most recently designed the set and lights for *Beyond Caring*. Prior to, he directed and designed *Blood Wedding* last season. Recently he designed Mary Zimmerman's *Rusalka* at the Metropolitan Opera in NYC and *Timon of Athens* (for Amanda Dehnert at Oregon Shakespeare Festival). Last winter, he opened a new *A Christmas Carol* at McCarter Theatre in Princeton, NJ.

DAVID SCHWIMMER was thrilled to co-produce *Beyond Caring* with Lookingglass, and is preparing to direct *Plantation!* by Ensemble Member Kevin Douglas next season.

JOEY SLOTNICK just finished the Broadway revival of *The Front Page*. He was last seen in Chicago with his improvisational colleagues Lauren Katz & John Lehr for the 20th Chicago Improv Festival.

TRACY WALSH recently appeared in and choreographed *Electra* at Court Theatre. Most recently at Lookingglass, she choreographed *Blood Wedding* and choreographed and appeared in *The North China Lover*. She wrote and directed *Handle With Care*, a play about quality, affordable childcare which is currently being performed around Chicago.

TEMPLE WILLIAMS III is Chief Operating Officer of 51 Minds Entertainment (an Endemol Company), a Los Angeles based production company focused on non-scripted television. Additionally, Temple is Chief Executive of Freedom Media, a company dedicated to financing independent feature films (credits include, *The Forger* and *Maggie's Plan*). Temple lives in Los Angeles with his wife, photographer and entrepreneur Cyndi Finkle, and their daughter, Sullivan Clare Williams.

MARY ZIMMERMAN directed the Leonard Bernstein musical *Wonderful Town* at Goodman Theatre last fall. In February she directed the Dvorják opera *Rusalka* at the Metropolitan Opera, broadcast live to movie theaters in Chicago and around the world. This summer, she will revisit her *Odyssey* (Lookingglass 1990; Goodman, 1999) at the Oregon Shakespeare Festival in the outdoor theatre.

For **KAREEM BANDEALY, DAVID CATLIN, ANTHONY FLEMING III, RAYMOND FOX, PHILIP R. SMITH, HEIDI STILLMAN** and **ANDREW WHITE** see the **PROFILES** section.

LOOKINGGLASS THEATRE COMPANY

Join us for the 30th Anniversary Season!

CHARLES DICKENS'

HARD TIMES FOR THESE TIMES

THE LOOKINGGLASS ORIGINAL RETURNS

October 4, 2017 – January 14, 2018

Adapted and Directed by
Ensemble Member Heidi Stillman
From the Book by Charles Dickens
In Association with The Actors Gymnasium

Plantation!

WORLD PREMIERE

February 21 – April 22, 2018

Written by Ensemble Member Kevin Douglas
Directed by
Ensemble Member David Schwimmer

20,000 LEAGUES UNDER THE SEAS

WORLD PREMIERE

May 23 – August 19, 2018

Adapted by David Kersnar and Althos Low
From the Books by Jules Verne
Directed by Ensemble Member David Kersnar

Subscribe Today!

lookingglasstheatre.org/subscribe
312.337.0665

lookingglass 30

LEARN TO FLY

Classes for adults

Summer circus intensive

Professional circus
training program

Society of American
fight director classes



**the actors
gymnasium**
Circus & Performing
Arts School

acrobatics aerial arts juggling
physical theatre stage combat
gymnastics and MORE!

ACTORSGYMNASIUM.ORG



**SPEND YOUR SUMMER
WITH LOOKINGGLASS!**

Registration is open for all summer camps, for students in
grades K-8. For more information, including dates and themes:

lookingglasstheatre.org/camps

40th ANNIVERSARY SEASON



HS
**HUBBARD STREET
DANCE CHICAGO
CELEBRATING 40 YEARS**

*Four programs dedicated to the
company's most celebrated choreographers.*

FALL SERIES September 21-24, 2017 at the Harris Theater
*Featuring works by Choreographer **Peter Chu***

WINTER SERIES December 7-10, 2017 at the Harris Theater
*An Evening of **Crystal Pite***

SPRING SERIES March 23-24, 2018 at the Auditorium Theatre
*An Evening of **Alejandro Cerrudo***

SUMMER SERIES June 7-10, 2018 at the Harris Theater
*An Evening of **Ohad Naharin***

Subscribers get the best seats at the best prices.
hubbardstreetdance.com/subscribe

Hubbard Street Dancer Florian Lochner, concept by Alejandro Cerrudo. Photo by Quinn B Wharton.

SUPPORT LOOKINGGLASS

We invite you to join the donor family that helps bring theatre to life on stage and in the classroom. Lookingglass Theatre Company depends on the generous, ongoing investment of its donors and patrons to create innovative and artistically excellent theatrical productions, and to share its ensemble-based techniques with underserved youth in the Chicago community. These tax-deductible contributions bridge the gap between ticket sales and the actual costs of Lookingglass programming. We invite you to be part of the collaboration that makes great theatre possible by donating to Lookingglass Theatre Company. Whatever the amount, your gift will help sustain the breadth and quality of Lookingglass' work, both onstage and in the community. **To make a donation by phone or for more information on making a gift, please contact the Development Department at 773.477.9257 X 122. Donations can be addressed to 875 N Michigan Ave, Suite 1430, Chicago, IL 60611.**

Production Sponsor



**National
Endowment
for the Arts**
arts.gov

Opening Night Sponsors

PARK HYATT CHICAGO®



Season Sponsors



PARK HYATT CHICAGO®

PARK HYATT NEW YORK®



Betsy and Jim Benoit and the
STS FOUNDATION



Government Supporters



This program is partially supported by a grant from the Illinois Arts Council Agency through federal funds provided by the National Endowment for the Arts



CORPORATE + FOUNDATION SUPPORTERS

Premiere Benefactor

MacArthur
Foundation

Eminent and Leading Benefactors

**Allstate** | CHICAGO'S OWN
GOOD HANDS


ALPHAWOOD
FOUNDATION CHICAGO

BMO  Harris Bank

PAUL M. ANGELL
FAMILY FOUNDATION

 HEARN

The Hearst
Foundations

 incredible
TECHNOLOGIES®

POLK BROS FOUNDATION
a foundation for chicago families

THE SHUBERT
FOUNDATION INC.

UNITED 

Landmark Benefactors


A. Marek
FINE JEWELRY


ART WORKS.

National
Endowment
for the Arts
arts.gov

The Crown Family

ComEd®


DD
DORIS DUKE
CHARITABLE FOUNDATION


HMS
MEDIA

LLOYD A. FRY
FOUNDATION

 NORTHERN
TRUST



PARK HYATT CHICAGO®

PARK HYATT NEW YORK®

Shirley Ryan
Abilitylab


STEINER
THE STEINER-KERMAN
EDUCATION FOUNDATION

Betsy and Jim Benoit and the
STS FOUNDATION

Cornerstone Benefactors

Joseph & Bessie
Feinberg Foundation

Goldman
Sachs

The Milne Family
Foundation

Prince
Charitable Trusts

The Harold and Mimi
Steinberg Charitable Trust

WINTRUST

BOARD OF THE DIRECTORS

CHAIRMAN

John McGowan

PRESIDENT

Nancy Timmers

VICE PRESIDENTS

Jon Harris

Jill Reznick Meier

Darren Snyder

TREASURER

Kathleen B. Fanning

SECRETARY

Charlotte B. Whitaker

ARTISTIC DIRECTOR

Heidi Stillman

EXECUTIVE DIRECTOR

Rachel E. Kraft

IMMEDIATE PAST CHAIRMAN

Joe Brady

CHAIRMEN EMERITUS

Richard A. Ditton

Lisa Naparstek Green

Ernie Arias

Mary Baglivo

Gerry Barad

Leigh Buchanan Bienen

Allegra E. Biery

Thomas Newton Bolling

David Catlin

Richard Chapman

Lester N. Coney

Al DeVaney

Edward Filer

Charlie Frankel

Lee Golub

Paul Gray

Lindsay D. Hearn

Dr. Elena Kamel

Lindsay Knight

Rocque E. Lipford, Jr.

Laura Matalon

Melinda McMullen

Dr. Marla Mendelson

Tom O'Neill

Robert Palffy

Brenda Robinson

Dr. Abbie Roth

Peter Roth

Philip R. Smith

Thomas Stat

David Sulaski

William A. Vainisi

Steven A. Weiss

Diane Whatton

Andrew White

NATIONAL COUNCIL

Billy Dec

Carol Genis

Todd Leland*

J. Scot Pepper*

Kevin Rochford*

EMERITUS COUNCIL

Geoffrey Baer

Liz Barrett

Richard Bromley

Julie Foley

Celia G. Leventhal

Taylor Malishenko

Alex Miller*

Donna Schatt

Matthew Smith

Jeffrey Steigelman

Lane Winter Vanderslice

Dr. Annabelle Volgman

Arnold Widen, M.D.

PRESIDENTS EMERITUS*

Christine Mary Dunford

James Johnson

John Morris

ASSOCIATES BOARD

FOUNDER

Billy Dec

PRESIDENT

Lindsay Knight*

IMMEDIATE PAST

PRESIDENT

Tai Duncan*

VP MEMBERSHIP

Molly Beran*

VP EVENTS

Jillian Tribbett*

VP MADHATTER'S CLUB PASS

Kate McMahon*

VP OUTREACH AND BRAND

Stephanie Swiatek*

MEMBERS

Jessica Barrutia

Gregory Claus

Cameron Croft

Jason Griffith

Philip de Guzman

Jacqueline Helmricks

Kimberly Kocur

Jameson LaMarca

Ali McAnaney

Julie Milligan

Meghan Quist

Sam Reiff

Jordan Rummel

Adam Schomaker

Chris Vainisi

Mindy Wetzel

Jai Winston

* Executive Committee

LOOKINGGLASS STAFF

ARTISTIC

Artistic Director
Heidi Stillman

Producing Director
Philip R. Smith

**Connectivity and
Engagement Director**
Andrew White

Casting Associate
Raymond Fox

New Works Associate
Caroline Macon

**Artistic and
Executive Assistant**
Anne Walaszek

EDUCATION AND COMMUNITY

**Director of Education
and Community
Programs**
Lizzie Perkins

Master Teacher
Thomas J. Cox

Education Coordinator
Sam Kaser

BUSINESS

Executive Director
Rachel E. Kraft

General Manager
Michele V. Anderson

Business Manager
Nora Leahy

**IT and Office
Coordinator**
Kendall Taylor

DEVELOPMENT

**Director of
Development**
Jennifer McCarthy
Bienemann

**Associate Director
of Development**
Michael Cansfield

**Individual Giving
Associate**
Mitch Fischer

Development Associate
Rachael Niederhauser

**Coordinator of
Corporate,
Foundation, and
Government Giving**
Ginnie Redmond

MARKETING

Director of Marketing
Anna Marie Wilharm

Marketing Coordinator
Mary Alex Japczyk

**Audience Development
Coordinator**
Corinne Bass

Graphic Designer
Sarah Stec

AUDIENCE SERVICES

**Manager of
Audience Services**
Kimberly Lawson

**Assistant Manager of
Audience Services**
Dan Wenzel

Bar Supervisor
Tamara Becker

**Audience Services
Staff**

Terrie Carolan
Mitch Harvick
Andy Monson
Matthew Moynihan
Corrie Riedl

PRODUCTION

Production Manager
Sarah Burnham

Technical Director
Eleanor Richards

Master Electrician
Ivy Reid

Sound Supervisor
Josh McCammon

**Production
Coordinator**
Victoria Johnson

SUMMER INTERNS

**Education and
Community Intern**
David Barber
Abigail Doermann
Lucia Frisancho
Hannah Gellman
Grady Jensen
Si Squires-Kasten
Tempest Wisdom

Development Intern
Emma Murphy

Marketing Intern
Daryn Robinson

Artistic Admin Intern
Sophie Hoyt

**Production
Management Intern**
Andrea Canizares-
Fernandez

COUNSEL

Public Relations
Cathy Taylor Public
Relations, Inc.

Legal Services
Edward Filer
Jean S. Ward

Auditors
Baker Tilly Virchow
Krause, LLP

Computer Consulting
Ted Giesler, Cypress
Consulting Group, Ltd

Video Content
HMS Media

Media Agency
Allied Live

Photography
Liz Lauren
Sean Williams

**Producing and
Touring**
Jan Kallish

**Lookingglass
Logo Design**
Elizabeth Kairys

Web Design
Faust LTD

**Planning and
Development**
Kathy Hurley Consulting

The Lookingglass Watermark SOCIETY

The Watermark Society provides the financial foundation for Lookingglass' innovative programming. Members enjoy VIP ticketing services, invitations to private events with Lookingglass Artists, complimentary subscriptions, and advance opportunities to purchase tickets. We are pleased to recognize contributions received January 1, 2016–February 28, 2017. For more information, contact Mitch Fischer, Individual Giving Associate, at 773.477.9257 X 153 or mfischer@lookingglasstheatre.org.

LANDMARK

A. Marek Fine Jewelry
Mary Baglivo and
Jim Meguerian
Gerry Barad
Mary Jo and Doug Basler
Michael and Kim Beatrice
Betsy and Jim Benoit
on behalf of the
STS Foundation
Leigh and Henry Bienen
Thomas Newton Bolling
and Laureen Schipsi
Joe and Shannon Brady
Douglas R. Brown
Joyce and Bruce Chelberg
Richard Chapman
Richard A. Ditton
Ms. Shawn M. Donnelley
and Dr. Christopher M.
Kelly
Kathy and Kevin Fanning
Kurt and Rebecca Feaster
Doug and Katie Frey
Paul and Dedrea Gray
Lisa Naparstek Green and
Howard Green
Rocque and Anne Lipford
Jo and Dan Lisowski
John McGowan and
Dave Robbins
Melinda McMullen and
Duncan Kime
Jill Reznick Meier and
Jonathan Meier
Mark and Nancy Ratner
Abbie Helene Roth and
Sandra Gladstone Roth
Joan and Paul Rubschlager
Patrick G. and Shirley W.
Ryan Foundation
Darren and Anne Snyder
David Sulaski
Lorraine and Steve Weiss
Diane and Chris Whotton

CORNERSTONE

Marcia Baylin
Allegra Biery and
René Cornejo
Deborah A. Bricker
Ben and Frances
Collins-Sussman
Al DeVaney
Lisa and Geoffrey Dybas
Don and Anne Edwards
Lee and Sandy Golub
Richard and Mary Gray
Vered Hankin and
Jeremy Kaufman
Benetta Jensen
Jared Kaplan and
Maridee Quanbeck
Rachel E. Kraft
Dr. Paul M. Lisnek[^]
Janet Melk
Marla Mendelson and
Stephen Wolff
Kevin and Michelle Mize
Jordan and
Jean Nerenberg
Thomas O'Neill and
Ann David
Elise Paschen and
Stuart Brainerd
Eileen and Jeffrey Richards
Kevin and Julie Rochford
Neil Ross MD and
Lynn Hauser
George and
Kathleen Rummel
Donna Schatt
Rosemary Schnell
Nancy and
Michael Timmers
Stephanie and John Tipton
Charlotte B. Whitaker

MILESTONE

Edgar Bachrach
Liz Barrett
Richard and
Marilyn Bromley
David Chen and
Brandon Yates
Karen and Tuey Connell
Paul Dykstra and
Spark Cremin
Jim and Sandy Freeburg
Joyce and
Timothy Greening
Diane and Sol Hara
Jon and Allie Harris
Bob and Connie Hickey
Linda Karn
Pamela G. Meyer
Morton and Judy Pomeranz
Valeria and David Pruett
Deborah and
Stephen Quazzo
Jane Quinn and
Jeffrey McCarthy
Diana and Bruce Rauner
Michael and Diana Sands
Lizzy and Josh Scheinfeld
Preston and Irena Simons
Jay Tunney
Brady Twiggs

FOUNDATION

Anonymous
Jean Antoniou
Stephanie and
Dana Arnett
Warren L. Batts
Amy and Charles Bickers
Janet and Joel Burch
The Elting Burlant Family
David and Kerry Catlin
Patricia, Kevin, and
Mirabel Chin
Kay Collier
Lester N. Coney
Carey Cooper

Mary Jane and Tom Dee
Dr. J. Anthony Dillon
James and Lynn Drew
Sidney* and
Sondra Epstein
Paula and David Harris
David D. Hiller
Laura Jones and
Richard Hunt
Mr. and Mrs. Christian B.
Jessen
Jonathan Klein and
Susan Cohn
Vivian Lazar
Howard Learner and
Lauren Rosenthal
Family Fund
Taylor Malishenko
Maryhelen Matjievic
Barbara and
Daniel O'Keefe
Sharon and
Lee Oberlander
Lanny and Terry Passaro
Joe and Karla Pope
Raiselle and
Kenneth Resnick
Jeanne Rogers and
Perry Sainati
Nancy Searle
Renee and
Michael Sichlau
Nikki Will Stein and
Fred Stein
Matthew Steinmetz
Jon and Jane Stillman
Marcia Tarre
Scott Turov
Monica Walker
Donald and Sylvia White
Leslie and Robert Zentner

[^] This donor is ensuring
the future of Lookingglass
with a generous bequest

* We gratefully acknowledge
our deceased donors

DONORS

Lookingglass Theatre Company gratefully acknowledges the generosity of the many individuals, corporations, foundations, and government grantors who support Lookingglass and its innovative artistic and education programs. We are pleased to recognize contributions received January 1, 2016–February 28, 2017. We work diligently to keep our donor lists accurate and up-to-date. Please bring any unintentional errors, additions, or needed corrections to the attention of Rachael Niederhauser, Development Associate, at 773.477.9257 x122 or rniederhauser@lookingglasstheatre.org.

Corporate, Foundation and Government Supporters

PREMIERE BENEFACTOR (\$1,000,000 +)

The John D. and Catherine T. MacArthur Foundation

MAGNIFICENT BENEFACTORS (\$500,000–\$999,999)

City of Chicago Mayor Rahm Emanuel

State of Illinois: Department of Commerce
and Community Affairs

EMINENT BENEFACTOR (\$100,000–\$499,999)

HEARN

United Airlines

LEADING BENEFACTOR (\$50,000–\$99,999)

Alphawood Foundation

Allstate Insurance Company

BMO Harris Bank

Joseph and Bessie Feinberg Foundation

Polk Bros. Foundation

Paul M. Angell Foundation

The Hearst Foundations

The Shubert Foundation

LANDMARK BENEFACTOR (\$25,000–\$49,999)

A. Marek Fine Jewelry

ComEd

Conagra Brands

The Crown Family

Doris Duke Charitable Foundation

Betsy and Jim Benoit and The STS Foundation

Lloyd A. Fry Foundation

The Milne Family Foundation

National Endowment For The Arts

Steiner Kerman Education Foundation

Northern Trust

Wintrust

CORNERSTONE BENEFACTOR (\$15,000–\$24,999)

Adrian Smith + Gordon Gill Architecture

Goldman Sachs

Harold & Mimi Steinberg Charitable Trust

Prince Charitable Trusts

DISTINGUISHED BENEFACTOR (\$10,000–\$14,999)

BOK Center

CDW

Elizabeth F. Cheney Foundation

Global Spectrum

Grosvenor Capital Management

JPMorgan Chase & Co

Livingstone Partners LLC

Make It Better Media

MARSH Private Client Services

Mesirow Financial

Rooney, Rippie & Ratnaswamy LLP

SMG

SPLASH

United Center

Wells Fargo Center and Spectra Venue Management
by Comcast Spectator

PRODUCING BENEFACTOR (\$5,000–\$9,999)

Ariel Investments

Blue Cross Blue Shield of Illinois

Dr. Scholl Foundation

Irving Harris Foundation

John R. Halligan Charitable Fund

RSM

The Davee Foundation

The Pauls Foundation

The Siragusa Foundation

DIRECTING BENEFACTOR (\$2,500–\$4,999)

HBK Engineering, LLC

Negaunee Foundation

The Chicago Community Foundation
Persons With Disabilities Fund

DONORS

The Benefactors of THEATRE THAT MOVES: THE CAMPAIGN FOR LOOKINGGLASS

THE BIG DOG FUND Flyspace contributed in honor of Jill Reznick Meier	DOLORES KOHL KAPLAN & MORRIS* KAPLAN	NORTHERN TRUST Contributor of the balcony
HOPE ABELSON*	THE LELAND FAMILY Contributors of the chimney passageway	LORI & J. SCOT PEPPER
RICHARD A. DITTON Contributor of the women's restroom	LOOKINGGLASS ENSEMBLE FRIENDS & FAMILY Contributors of the Compass Room	DAVID L. SCHWIMMER Sound system contributed in honor of Syd & Mac Colman; Lighting system contributed in honor of Bea and Bert Schwimmer
THE GREEN FAMILY Howard Green & Lisa Naparstek Green David Green & Mary Winton Green	LOOKINGGLASS ASSOCIATES BOARD Contributors of the box office	* We gratefully acknowledge our deceased donors
JP MORGAN CHASE Contributor to the Studio Theatre	MELINDA MCMULLEN Contributor of the women's dressing room	
BURTON* & ANNE KAPLAN		

Individual Supporters

\$1,000,000+ Anonymous	\$10,000-\$24,999 Anonymous Abbe and Adam Aron Mary Bagliivo and James Meguerian Janice Beck The Big Dog Fund Joe and Shannon Brady Douglas R. Brown Mindy Chapman Memorial Fund Joyce and Bruce Chelberg Lester N. Coney Peter and Paula Fasseas Lee and Sandy Golub Lisa Naparstek Green and Howard Green Drs. Elena and Perry Kamel Goldman Sachs Gives— Chris Keogh Cheri Lawrence Jason and Yvonne Lee Marla Mendelson and Stephen Wolff John Page M+M Murzanski Jeff Nickler—BOK Center Anne Pramaggiore Brenda Robinson	Abbie Helene Roth and Sandra Gladstone Roth Lizzy and John Scheinfeld Darren and Anne Snyder David Sulaski Char Whitaker	Patrick G. and Shirley W. Ryan Foundation Rosemary Schnell Lorrayne and Steve Weiss Diane and Chris Whotton Karen Zelden and Ralph Sensit
\$100,000-\$999,999 Richard A. Ditton		\$5,000-\$9,999 Anonymous Mary Jo and Doug Basler Thomas Newton Bolling and Laureen Schipsi Michael and Kim Beatrice Allegra Biery and René Cornejo Edward Chun Kathy and Kevin Fanning Kurt and Rebecca Feaster Douglas and Katherine Frey Al DeVaney Vered Hankin and Jeremy Kaufman Rachel E. Kraft Rocque and Anne Lipford Dan and Jo Lisowski Drs. Annette and John Martini Jill and Jonathan Meier Mark and Nancy Ratner	\$2,500-\$4,999 Liz Barrett Marcia Baylin Deborah Bricker Joan and Bob Clifford Ben and Frances Collins-Sussmann Billy and Katherine Dec Lisa and Geoffrey Dybas Anne and Don Edwards Richard and Mary Gray Mirja and Ted Haffner Jon and Allie Harris Mr. and Mrs. Paul T. Jenson Jared Kaplan and Maridee Quanbeck The Rhoades Foundation Dr. Paul M. Lisnek*
\$50,000-\$99,999 Nancy and Michael Timmers Joan and Paul Rubschlager			
\$25,000-\$49,999 A. Marek Fine Jewelry Gerry Barad Leigh and Henry Bienen Paul and Dedrea Gray Ms. Shawn M. Donnelley and Dr. Christopher Kelly Elaine and Larry Hodgson John McGowan and Dave Robbins Melinda McMullen and Duncan Kime David L. Schwimmer and Zoe Buckman Donald Wilson			

^ This donor is ensuring
the future of Lookingglass
with a generous bequest

Laura Matalon and
Spencer Waller
Janet Melk
Kevin and Michelle Mize
Jordan and Jean
Nerenberg Family
Foundation
Thomas O'Neill and
Ann David
Elise Paschen and
Stuart Brainerd
Jeffrey and Eileen Richards
Kevin and Julie Rochford
Neil Ross MD and
Lynn Hauser MD
George and
Kathleen Rummel
Donna Schatt
Irena and Preston Simons
John and Stephanie Tipton

\$1,500-\$2,499

Edgar Bachrach
Rick and Deann Bayless
Maria Bechily and
Scott Hodes
Karen and Tuey Connell
John Forrest
Jim and Sandy Freeburg
Joyce and
Timothy Greening
Diane and Sol Hara
Bob and Connie Hickey
Benetta Jenson
Ronald and
Meredith Kaminski
Linda Karn
Jim and Barb Lapetina
Marc and
Beth McCormack
Pamela G. Meyer
Sharon and
Lee Oberlander
Barbara and
Daniel O'Keefe
Morton and Judy Pomeranz
David and Valeria Pruett
Jane Quinn and
Jeffrey McCarthy
Deborah and
Stephen Quazzo
Diana and Bruce Rauner
Michael and Diana Sands
Renee and
Michael Sichlau

Ross Shelman
Scott and Kim Stiffle
Jay Tunney
Scott Turov
Brady Twiggs
Lynne and
David B. Weinberg
David and Randi Winter
Ms. Brandon Yates and
Mr. David Chen

\$1,000-\$1,499

Constantine Alexandrikis
Anonymous (2)
Jean Antoniou
Stephanie and
Dana Arnett
Mr. and Mrs. Warren L.
Batts
Charles and Amy Bickers
Janet V. Burch and
Joel R. Guillory
David and Kerry Catlin
Don Carone
Kevin, Patricia and
Mirabel Chin
Kay Collier
Sean Conroy and
Nora Daley
Carey Cooper
The Crown
Goodman Family
Dr. J. Anothony Dillon
James and Lynn Drew
Paul Dykstra and
Spark Cremin
Tom and Mary Jane Dee
Laura Eason
The Elting Burlant Family
Sondra Berman Epstein
Lori Gray Faversham
Ruth Ann Gillis
Paul and David Harris
David D. Hiller
Tom and Maggie Hurwich
Laura Jones and
Richard Hunt
Mr. and Mrs. Christian B.
Jessen
Jonathan Klein and
Susan Cohn
Robert Kohl and
Clark Pellett
Vicki Lazar

Howard Learner and
Lauren Rosenthal
Lookingglass
Associates Board
Taylor Malishenko
Maryhelen Matijevic
Alice and Gregory Melchor
Cindy Moelis
Lanny and Terry Passaro
Joe and Karla Pope
Raiselle and
Kenneth Resnick
Sarah Ripmaster
Jeanne Rogers and
Perry Sainati
Nancy Searle
Fredric and Nikki Will Stein
Matthew Steinmetz
Jon and Jane Stillman
Kathleen and
William Streff
Marcia Tarre
Monica Walker
Donald and Sylvia White
Leslie and Robert Zentner

\$500-\$999

Anonymous
Danny and Andrea Alpert
Ernie Arias and
Michael Feldman
Susan Benner
Eric Bresler
Juliene Britz
Richard and
Marilyn Bromley
Patrick and Betsy Canning
Janet Carl Smith and
Mel Smith
Robert Clasen
Michael Evans
Bob Faust
Jerry Freedman and
Elizabeth Sacks
Linda Furey
Susan Mabrey Gaud
Michael Goldberger[^]
John Goodman
Goodman Theatre,
Robert Falls, and
Roche Schulfer
Jerry and Patty Hanner
Lora-Lee Hall
Paula and David Harris

David and
Kathy G. Holmes
Tim and Monica Jaster
Bruce Johnson
Cynthia and Jean Joho
Lynn and George Jones
Charles L. Katzenmeyer
Debbie and Jack Kelleher
Melinda Knight
Kerana and Avram Kraft
Sherry and Mel Lopata
Larry and
Karen McCracken
Rachel Davis Mersey
Bernie and Sandra Meyer
Rita Moore
Eileen M. Murray
Thomas Nolasco
Robert Palffy
Mark Pellegrino
Irwin Press
Claire and
Gordon Prussian
Monica Raymund
David Sandelin
Aurobind and
Kaveri Satpathy
Bill Savage
Roche Schulfer and
Mary Beth Fischer
Liz and Jeff Sharp
Diane W. Smith
Langhorne and
Marilyn Smith
Sue E. Stealy
Jeff Steigleman
Lamarr Taylor
Courtney A. Thompson
Anne Van Wart and
Michael Keable
John Wheeler and
Dana Gapinski
Susan J. White
Lawrence White
Elizabeth Zott

\$250-\$499

Anonymous (5)
Gordon Berry and
Mary Hynes-Berry
Adrian and Arta Beverly
Jim and Beth Biery

[^] This donor is ensuring
the future of Lookingglass
with a generous bequest

DONORS

Barbara Blair	Dan and Ann O'Brien	Tim Christopher and	Cayenne Harris
Steven Brint	Bruce Oltman	Olivia Lopez	Tracey Head
John F. Byrd	Susan Padveen	Gregory Claus	Jacqueline Helmrick
Brian Carl	Jim and Sue Pajakowski	Samantha Cocker	Allen Hintz
James Chapman	Gil and Carolyn Parsons	Margery and Robert Coen	Jim and Eileen Holzhauer
Sharon Conway	Fraser and Ellen Perkins	Jim Corrigan	Justin S. and
Rosemary Crowley	Jesse and Elizabeth	Mary Alice Costello	Hilarie V. Huscher
Earl Cunningham	Peterson Hall	Jane Coyne	Barbara Huyler
Amanda Dehnert	Betty and	Debbie Crimmins and	Velan/Jain
Red Delaney	Thomas Philipsborn	Paul Goerss	Martha Jameson
Pat and Richard Doonan	D. Elizabeth Price	Nancy and	Susan Janko
Ryan Duffy	Richard Prinz	Joseph Crowther	Swadesh Kalsi
Larry Eclov	Merle Reskin	Bruce and Laurie Davidson	Lenore Kaplan
Steven B. Edelstein, MD	Anu Sharma Family	Patty Delony	Wayne Kaplan
Emily and Jon Eller	Lizz and Jeffrey Sharp	Bernice Dorig	Drs. Jack and
Greg Foster-Rice	Scott Silberstein	Judith Elting	Marilyn Kessler
Timothy and Janet Fox	W. and E. Stenhouse	malcolm d. ewen	Roger Kiley and
Willard Fry	Barbara Strauss	Merri Ex	Dawn Goulet
Ethel and Bill Gofen	William Sullivan	Francoise and	Diana and Neil King
Sharon Golan	Kimberly K. Taylor	John Falkenholm, Jr.	Monica Klein
Stephen Golan	William and Janine Vainisi	Leslie Fedota	Lindsay Knight
Megan Goldish	Linda and Dennis Wilt	Dr. and Mrs. Anthony	Lionel and Jackie Knight
Sharran Greenberg	Andy White and Shari Joffe	Finder	Michael Koenigsknecht
Joy Gregory	Susan Wolz	Catherine Flaa	and Nancy Armatas
Michael Hansen and	Susan Schaalman	Jan and Bill Flapan	Rick Kogan
Nancy Randa	Youdovin and	Joan and Ron Fox	Rhonda Kokot
Doug Hara	Charlie Shulkin	Father Mark A. Fracaro	Betty Kolb
Steven and Lenore Harris		Charlie and	Susan Koralik
John Henderson	\$100-\$249	Stephanie Frankel	Adam Kraft
Karen Johnson	The Ajamias	Lauren Freedman	Bill Kron
Pat Johnson	Anonymous (9)	Daryl Galinsky	Angela and Hari Kumar
Dr. Morris A. and Celia F.	John Baglivo	Pat Garcia and	Deborah Lader and
Kaplan Foundation	Rossann Baker-Priestley	Julie Barton	Michael Silver
Karen Kmetik	Kate Balbier	Brian Gedvilas	Jeanne LaDuke
Knuth Family Fund	Judith Barnard	Dorothea and	Elissa Lafayette
Susan Kossiakoff	Jessica Barrutia	Philip Genetos	Simon and Lydia Lambert
Cindy and Jim Lamson	Walter Bayer	Patricia and Melvin Gerbie	Patricia Latkin
Jim and Laurel Lannen	Jennifer and	Edward Gibbons	Peter and Judy Lederer
Don Law	Robin Bienemann	Rosemary Gilmore	Joan and Murray Levin
Suzanne Le Mignot	Kendall M. Bilbro	Ashley Giroux	Phillip and Natalie Levin
Fran and Chuck Licht	Helaine A. Billings	Lori Gladstone	Sue and Sam Lewis
Katherine Logue	Luann Blowers	Deidra Gold	Sharon and Bob Lindgren
Margaret Madden and	John Boatright	Grace and	Eileen Madden
Richard Phillips	Ms. Nancy J. Bothne	Andrew Goodman	Peggy Madden and
Jack and Christine	Thomas F. Broderick	Erika Grados	Dick Phillip
Mardoian and Family	Adrienne and	Jim Hilly and Nancy Griffin	Annie Malone and
Cathleen R. Marine	Arnold Brookstone	Jason and	John Loft
Sheryl and	Joel and Carol Brosk	Katherine Griffith	Debra Marks
Michael Markman	Larry and Susan Broutman	Deborah Gubin	Inge Marra
William Mason	Suzette and Allan Bulley	Joan and Guy Gunzberg	Jim and Gay Mather
Rita McConville	William Carter	Sol Gutstein	Ann and Philip May
Kerry Miller and Nina Kavin	Sandy Chapman	V. Guziar/C. Cicala	Marcus and Catherine
Sheba Miller-Morris	Rana Choi and	Elaine and David Hacker	Maydew Foundation
Richard and	Ali Hortacsu	Sheila Hagan	Ali McAnaney
Beverly Moody	Mike Christ	Jennifer Hall	Maria and Bob McCabe
Toby and Gordon Newman		Marlene Halpern	Kathryn McMahon

Cheryl McPhilly
 Claire Miller
 Chuck and Sylvia Meyers
 David and Cynthia Nadig
 Patricia R. Naguib
 Marvin and Beth Najberg
 Bob Navarro
 Lori and David Nienke
 Virginia Nugent and
 Dr. Michelle M. Wright
 Seamus and
 Susan O'Mahoney
 Kira Osborne
 Elyse Pearlman and
 Brad Techenbrock
 David and Becky Perry
 Golnar Phillips
 Kathleen Polnik Sliter
 Michael Powell
 Ron and Karen Powell
 V Pristera Jr
 Meghan Quist
 Adele Rapport
 Add Milan Ramaiya
 Eva E. Redei and
 Edward L. Applebaum

Mary Reistetter
 Catherine Reiter
 John and Julie Rhoades
 Sarah and Mark Ricciardi
 Donna L. Robbins
 Sheila Rock
 Jordan Rummel
 Carolyn O. Rusnak
 Doug and Cathie Ruth
 The Saints
 Ms. Elise Salchli
 Ursula Sanne
 Mr. and Mrs. John Scala
 Adam Schomaker
 Mary Schostok
 Jean Schwartz and
 Jesse Horvath
 Barbara Scully
 Donald and Gail Segal
 Gail Seidman
 Kaycee Sewchok and
 Chris Glowacki
 Chantal and Bill Shapiro
 Jane A. Shapiro
 June Shulman

Wesley Skogan and
 Barbara Puechler
 Cory A. Smith and
 Steve W Klang
 Deb Soehlig
 Micki Somerman and
 Philip Zawa
 Rand Sparling and
 Adrienne Meisel
 Bonnie Spring
 Heidi Stillman and
 Rick Sims
 Kristin Stocke
 Mark Stolman
 Constance Sulkin
 Karen L. Swaback
 Stephanie Swiatek
 Elyse Pearlman and
 Brad Techenbrock
 Alvin and Karen Telser
 Barbara Thomas
 Karen Hletko Tiersky
 Margot Touris and
 Nicholas Kardos
 Margaret Abbott Trbojevic
 Joanne Tremulis

Thomas Tresser
 Sabrina Tsao
 Gretchen Vacendak
 Dr. Claire Wang, MD
 Mary Warren
 Russell H. Watt
 James and Mary Weidner
 Arnie and Judy Widen
 Clifton J. Wilkow and
 Robert Kinslow
 Mary Beth Williams
 Janet and Les Wilson
 Ms. Ann Wise
 James and Rita Wise
 Adam Wit
 Sarah Wolff and
 Joel Handelman
 Mr. William Woloshin
 Susan Schaalman
 Youdovin and
 Charlie Shulkin
 Jerry and Jody Zamirowski
 The Zeitlers

From the director of **THE LITTLE PRINCE** and **MOBY DICK**

A Midsummer Night's DAYDREAM

Adapted and directed by David Catlin



JULY 21 - 30

Northwestern | COMMUNICATION
 Virginia Wadsworth Wirtz
 Center for the Performing Arts

Ethel M. Barber Theater
 Box Office: 847-491-7282
WIRTZ.NORTHWESTERN.EDU

DONORS

Tribute Gifts

In Memory of

Mindy Chapman

Thomas Anderson
Jean Antoniou
Arthur Aufmann
Luann Blowers
Hallie Borden
Joe Bosco
Jonathan Boulahanis
David Bressler
Rachel Brody
William Carter
James Chapman
Richard Chapman
Sandy Chapman
Van Conroy
Marian Crabtree
Robert Dargis
CT Deibel
Lisa Dietrich
Judith Elting
The Elting Burlant Family
James Ewing
Brooke Fineman
Julia Friedman
Melissa Golan
Sharon Golan
Grace and Andrew
Goodman
Gary Green
Marla Guziec
Thomas Hall
Marlene Halpern
Anne Hanley
Stacy Heffez
James Heike
Renee Jacobs

Mike Janko
Susan Janko
Carol Kerman
Bruce Klein
Raymond Koenig
Rachel E. Kraft
Susan Kromelow
Susan Lape
Jack and Christine
Mardoian and Family
Debra Marks
Emily Marks
Suzanne Mendelsohn
Derrick Nadonga
Lisa Nanus
Jenny Newman
Toby and Gordon Newman
Linda Phillips
Pamela Plonsker
Alison Pohn
Jessica Robbins
Peter Robichaux
Patrice Ryan
Michelle Sandals
Mary Schostok
Gail Seidman
Jennifer Sergio
Lakshmi Shenoy
Benjamin Siegel
William Sullivan
Megan Sypher
Marcia Tarre
Mary Warren
Michael Wilkinson
Alexandra Williams
Eleanor Yuenkel
Andrew Ziccarelli

In Memory of

Penny Feuerstein

Douglas R. Brown and
Rachel E. Kraft

In Memory of

Marilyn Mesch

Jim Corrigan

In Memory of

James F. Oates

The Rhoades Foundation

On Behalf of

The Meier Family

The Big Dog Fund

In Honor of Gerry Barad

Eric Bresler
Randi and David Winter

In Honor of Leigh and Henry Bienen

Patrick G. and Shirley W.
Ryan Foundation

In Honor of Allegra Biery

Adrienne and
Arnold Brookstone

In Honor of Andrew Chun Scholarship Fund

Edward Chun
Claire Miller

In Honor of

Shawn M. Donnelley

María Bechily and
Scott Hodes
Efroymsen Family
Foundation
Lori Gray Faversham
Ruth Ann Gillis
Goodman Theatre,
Robert Falls and
Roche Schuller

Mirja and Ted Haffner
Robert Kohl and
Clark Pellett
Courtney Thompson
Joan and Bob Clifford

In Honor of Lee Golub

Carey Cooper

In Honor of Illinois

Susan Wolz

In Honor of

Victoria Johnson

Bruce Johnson

In Honor of Elena Kamel

Sarah Ripmaster

In Honor of

Rachel E. Kraft

Kerana and Avram Kraft

In Honor of

Caroline Macon and Heidi Stillman

Scott Silberstein

In Honor of

Laura Matalon

The Crown
Goodman Family

In Honor of

Dr. Abbie H Roth and Sandra Gladstone Roth

Lori Gladstone

In Honor of Michael and Nancy Timmers

Cynthia and Jean Joho
Suzanne Lemignot

In-Kind Gifts

A. Marek Fine Jewelry
ABSINTHE Las Vegas
Adam Dannheisser
Adam DeVarney
Adrienne Arsht Center
for the Performing Arts
of Miami
Allegra Biery &
Nothern Trust
Alliance Française
de Chicago

Alliance Theatre
Allied Live and
Laura Matalon
American Queen
Steamboat Company
American Sightseeing &
Gray Line Tours
Andaz 5th Avenue
Anthony Cristiano
Anthony Fleming III
Arena Stage

Barbara Bradford &
Robert Sherman
BBC
Beatrix
Bellagio
Berghoff Catering &
Restaurant Group
Bevy Restaurant
Blackfinn Ameripub
Bloomingdale's
Blue Man Group Chicago

BMO Harris Bank
Body Science PFT
Boka Restaurant Group
Bottleneck Management
Brenda Robinson
Broadway in Chicago
Burrito Beach
Cadella Med Spa
CH Carolina Herrera
Charlotte B. Whitaker
Charles R. Showalter

Chef Jean Joho	Fox Theatricals	Luxury Garage Sale	Rocque & Anne Lipford
Chicago Architecture Foundation	Francesca's	Malin + Goetz	Roe Faraone
Chicago Athletic Association Hotel	Frankie's—Lettuce Entertain You	Marchesa	Roger Beck Portraits
Chicago History Museum	Fred's at Barney's	Mario Tricoci	Rosebud Restaurants
Chicago Museum of Contemporary Art	Freehand Chicago	Marla Mendelson & Stephen Wolff	Roundabout Theatre RL
Chicago Shakespeare Theater	Gene and Georgetti	John McGowan & Dave Robbins	Sanders Fine Portraits
Chicago Symphony Orchestra	Gene Siskel Film Center	Mary Zimmerman	Sassoon Salon
Chicago Trolley and Double Decker Co.	Gerard Darel	Massage Envy Spa	Seadog Architecture
Classic Portrait Source	Gino's East	Max McGraw	Boat Tour
Conagra Brands	Goodman Theatre	Wildlife Foundation	Shaw's Crab House
Conrad Hotel	Grace Chicago	McCormick Bridgehouse & Chicago River Museum	Shedd Aquarium
Clarendelle	Gucci	Melinda McMullen & Duncan Kime	Sirron Pilates Studio
Crafthouse Cocktail	Hart Davis Hart	Mesirow Financial and Lester N. Coney	Sofitel Luxury Hotels
Cultivate Brewery	HEARN	Mezlan Chicago	South Coast Repertory
Dablon Vineyards	HMS Media & Scott Silberstein	Miss Motley Photography	Southern Cut BBQ
Dana Hotel and Spa	Hubbard & Jeanette Page	Mity Nice Bar & Grill	Steppenwolf
David Catlin	Hyatt Chicago	MORE Cupcakes	Theatre Company
David Manilow & Check Please	Magnificent Mile	Museum of Contemporary Art Chicago	STK Chicago
David L. Schwimmer	Hyatt Regency London—The Churchill	Museum of Science & Industry	Studio Vital
David Sulaski	Hyatt Regency San Francisco	Nail Art	Sunda
Delle Amiche Salon	It's About Face	Nancy & Michael Timmers	Susan Hyde
Devon Seafood Grill	Iwan Ries & Co.	NoMI	Suzanne Cummings
Diane & Chris Whatton	Joe & Shannon Brady	Northwestern University	Swirlz Cupcakes
Domaine Clarence Dillon & Chateau Haut Brion Wines	Joey Slotnick	OJ Series: Inside Scoop	Terlato Wines International
Douglas R. Brown	Joffrey Ballet	Park Hyatt Chicago	The Curious Incident of the Dog in the Nighttime
Easy-Ware and Charlie Frankel	John G. Shedd Aquarium	Park Hyatt New York and Ernie Arias	The Field Museum
Eataly Chicago	Jon & Allie Harris	Park Hyatt Paris Vendome	The Hampton Social
Ebert Fine Art Portraiture	Julie Gardziola	Park Hyatt St. Kitts	The Langham Chicago
Eiffel Tower Restaurant & Chef Jean Joho	Julie Kaplan Photography	Park Hyatt Washington	The Late Show with Stephen Colbert
Eli's Cheesecake	Kathy & Kevin Fanning	Pastoral	The Local Chicago
Entertainment Cruises	Katz & Stefani	Petterino's	The Peninsula Chicago
Evian	Kendra Scott Jewelry	Plaza del Lago	The Redhead Piano Bar
Expo Chicago	Key Magazine	Vision Center	The Second City
Fabbri Furs	Kindling Group	Plum Market	The Signature Room
Fairmont Chicago Millennium Park	Knightsbridge Wine Club	Preferred Planning Concepts, LLC	The Tremont Hotel Chicago
Fig & Olive	The Langham Chicago	Proxi	The Vig
Filini Restaurant and Raddison Blu Aqua Hotel	Lagunitas Brewing Company	Public Chicago	Theaster Gates & the Rebuild Foundation
Fleming's Prime Steakhouse and Wine Bar	Laura Eason	Radisson Blu Aqua Hotel Chicago	Thomas Stat
Four Seasons Hotel Chicago	Le Colonial	Revel Fulton Market	Tru Restaurant
	Le Clarence Paris	Richard A. Ditton	United Airlines and Thomas Newton Bowling
	Lee and Sandy Golub	Rick & Deann Bayless	United Graphics and Mailing Group
	Leigh & Henry Bienen	Robert Campbell Photography	VenueOne Chicago
	Lettuce Entertain You Enterprises	Rockit Ranch Productions	Vosges Haut Chocolate
	Lincoln Park Zoo		Waldorf Astoria Chicago
	Lindsay Knight		Wendella Boats
	Live Nation Global Touring and Gerry Barad		Wyndham Chicago
	Lost Dunes Golf Resort		Riverfront
	Lucky Strike Entertainment		Zach Spangler

SERVICES, AMENITIES + COURTESY

ADMINISTRATIVE OFFICE

875 N Michigan Ave, Suite 1430
Chicago, IL 60611
773.477.9257

THEATRE AND BOX OFFICE

821 N Michigan Ave
(Theatre entrance on Pearson Ave)
Chicago, IL 60611
312.337.0665

lookingglasstheatre.org

BOX OFFICE HOURS

During the Run of a Production:

- Tuesday-Sunday: 12-8PM
- Closed on Mondays

Between Productions:

- Tuesday-Thursday & Saturday: 12-6PM
- Friday: 12-4PM
- Closed Sunday & Monday

SEASON SUBSCRIPTIONS

Subscribers receive priority seating, advance ticket sales, unlimited free ticket exchanges, great offers at partner restaurants, invitations to exclusive events, discounts on tickets, education classes and camps, parking, and more! Call 312.337.0665 or visit lookingglasstheatre.org/subscribe.

GROUP SALES

Groups of 8 or more save up to 20% based on group size and performance date. For more information, call 773.477.9257 X 125 or email groupsales@lookingglasstheatre.org.

GIFT CERTIFICATES

Lookingglass gift certificates are perfect for all occasions. Available in any denomination, gift certificates can be exchanged for tickets to any Lookingglass production. Gift subscriptions offer the recipient guaranteed seats and the numerous perks and discounts available only to subscribers. To order, call the box office at 312.337.0665 or stop by the next time you attend a show.



ACCESSIBILITY

Lookingglass Theatre is accessible to people who use wheelchairs, those who cannot walk stairs, and patrons with visual and hearing impairments. Please notify the box office in advance of your visit so that we can best accommodate your needs. Box office: 312.337.0665 or box@lookingglasstheatre.org.

Lookingglass is pleased to offer an open captioned and an audio described performance for each production in our 2016-17 season.

For more information, visit

lookingglasstheatre.org/accessibility.

LOST AND FOUND

Lost and found information may be exchanged at the box office; please call 312.337.0665.

CAMERAS AND RECORDING DEVICES

The use of cameras (with or without a flash), recorders, or other electronic devices is strictly prohibited. The video and/or audio recording of this performance by any means whatsoever is also strictly prohibited.

PAGERS, PHONES AND WATCH ALARMS

Patrons are asked to silence pagers, cellular phones, and watch alarms before entering the theatre.

LATECOMERS

Latecomers are seated at the discretion of management and may have to wait until a suitable break in the action of the play to be seated.

Smoking is prohibited.

Lookingglass Theatre is not responsible for personal property.

Lookingglass Coat Check is available for \$1 per item; all proceeds benefit Season of Concern. We cannot accept fur coats.

Thanks to The Saints: Volunteers for the Performing Arts for providing ushers. For information, visit saintschicago.org or call 773.529.5510.

Thanks to Carol Friedman, Lookingglass Theatre Company's Saints volunteer usher coordinator.

ENTER TO WIN tickets to a Lookingglass production by filling out our audience survey. Surveys can be completed online at lookingglasstheatre.org/survey.